



DADI INSTITUTE OF ENGINEERING & TECHNOLOGY

(Approved by A.I.C.T.E., New Delhi & Affiliated to JNTU, Kakinada)

NAAC ACCREDITED INSTITUTE Recognised under section 2(f) & 12(B) of UGC Act

ISO 9001:2008; ISO 14001:2004 & OHSAS 18001:2007 Certified Institution.

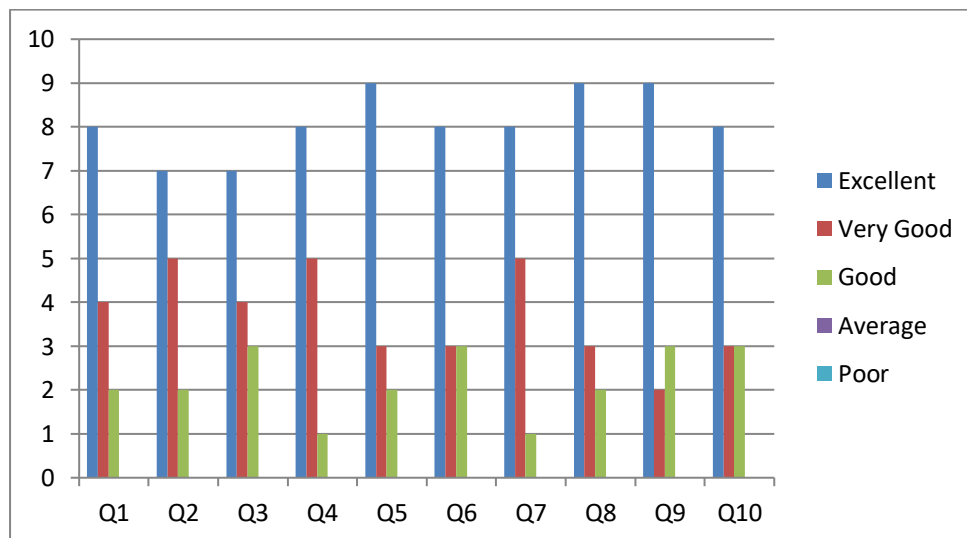
NH-5, Anakapalle – 531002, Visakhapatnam, A.P.

Phone: 08924-221111 / 221122/9963981111, e-mail: info@diet.edu.in

Department of Civil

EMPLOYERS FEEDBACK

SRL NO	Question	Excellent	Very Good	Good	Average	Poor
1	How do you rate relevance of the courses in relation to the program?	8	4	2	0	0
2	How do you rate the sufficiency of the courses related to industry that are included in the program?	7	5	2	0	0
3	How do you rate the competencies in relation to the course content?	7	4	3	0	0
4	How do you rate the sequence of the units in the syllabus?	8	5	1	0	0
5	How do you rate the relevance of the topics to the Industry?	9	3	2	0	0
6	Rate the offering of the in relation to the specialization streams?	8	3	3	0	0
7	How do you rate the offering of the electives in relation to the Technological advancements?	8	5	1	0	0
8	How do you rate the courses which are skills related suiting to the Industry included into the programs?	9	3	2	0	0
9	How do you rate the applicability of the domains and the tools used for designing the experiments in terms of existing practices in the Industry?	9	2	3	0	0
10	How do you rate the experiments in terms of their relevance to the real life application?	8	3	3	0	0





DADI INSTITUTE OF ENGINEERING & TECHNOLOGY

(Approved by A.I.C.T.E., New Delhi & Affiliated to JNTU, Kakinada)

NAAC ACCREDITED INSTITUTE Recognised under section 2(f) & 12(B) of UGC Act

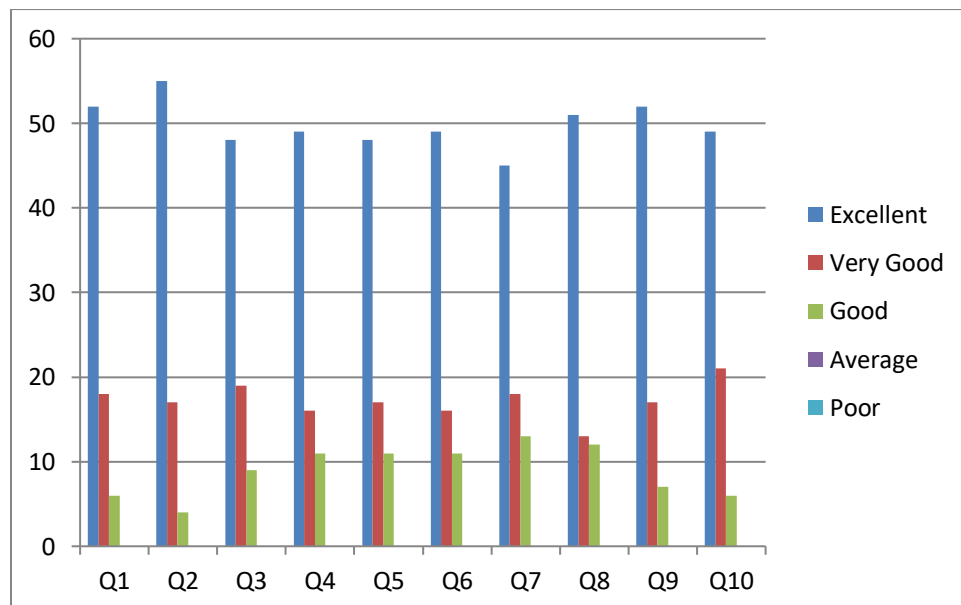
ISO 9001:2008; ISO 14001:2004 & OHSAS 18001:2007 Certified Institution.

NH-5, Anakapalle – 531002, Visakhapatnam, A.P.

Phone: 08924-221111 / 221122/9963981111, e-mail: info@diet.edu.in

PARENTS FEEDBACK

SRL NO	Question	Excellent	Very Good	Good	Average	Poor
1	How do you rate the program that your ward is undergoing in terms of the load of the courses in different semesters?	52	18	6	0	0
2	How do you rate the availability of the Text and reference books in the Market?	55	17	4	0	0
3	How do you rate the quality and relevance of the courses included into the semester?	48	19	9	0	0
4	How do you rate the treatment of the students by the faculty irrespective of the background of the student that includes Gender, cast, community creed etc. in teaching and evaluation?	49	16	11	0	0
5	How do you rate ambience of the university for effective delivery of the academic programs?	48	17	11	0	0
6	How do you rate the courses in terms of their relevance to the latest technologies or future technologies?	49	16	11	0	0
7	How do you rate the programs based on the comfort of your ward in coping with the workload?	45	18	13	0	0
8	How do you rate the quality of teaching in the university?	51	13	12	0	0
9	How do you rate the outcomes that your ward has achieved from the courses	52	17	7	0	0
10	How do you rate the transparency of the evaluation system in the University?	49	21	6	0	0





DADI INSTITUTE OF ENGINEERING & TECHNOLOGY

(Approved by A.I.C.T.E., New Delhi & Affiliated to JNTU, Kakinada)

NAAC ACCREDITED INSTITUTE Recognised under section 2(f) & 12(B) of UGC Act

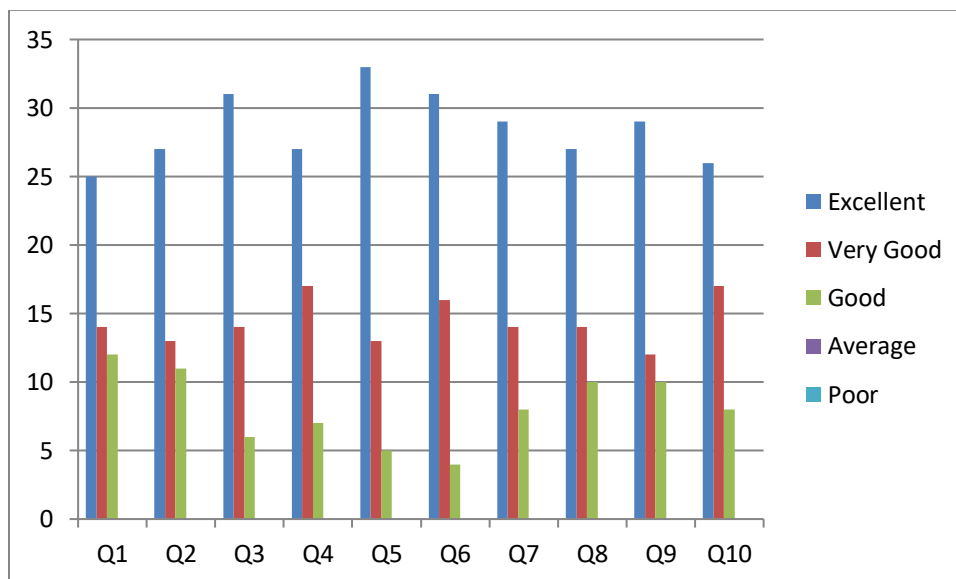
ISO 9001:2008; ISO 14001:2004 & OHSAS 18001:2007 Certified Institution.

NH-5, Anakapalle – 531002, Visakhapatnam, A.P.

Phone: 08924-221111 / 221122/9963981111, e-mail: info@diet.edu.in

ALUMNI FEEDBACK

SRL NO	Question	Excellent	Very Good	Good	Average	Poor
1	How do you rate relevance of the courses in relation to the program?	25	14	12	0	0
2	How do you rate the sequence of the courses included into the programs?	27	13	11	0	0
3	How do you rate the competencies in relation to the course content?	31	14	6	0	0
4	How do rate the sequence of the topics in the units?	27	17	7	0	0
5	Rate the offering of the in relation to the specialization streams?	33	13	5	0	0
6	How do you rate the offering of the electives in relation to the Technological advancements?	31	16	4	0	0
7	How do you rate the courses which are skills related suiting to the Industry included into the programs?	29	14	8	0	0
8	How do you rate the domain used for designing the experiments in terms of the suitability of the Tools to the domain?	27	14	10	0	0
9	How do you rate the experiments in terms of their relevance to the real life application?	29	12	10	0	0
10	How do you rate the courses that you have learnt in relation to your current Job	26	17	8	0	0





DADI INSTITUTE OF ENGINEERING & TECHNOLOGY

(Approved by A.I.C.T.E., New Delhi & Affiliated to JNTU, Kakinada)

NAAC ACCREDITED INSTITUTE Recognised under section 2(f) & 12(B) of UGC Act

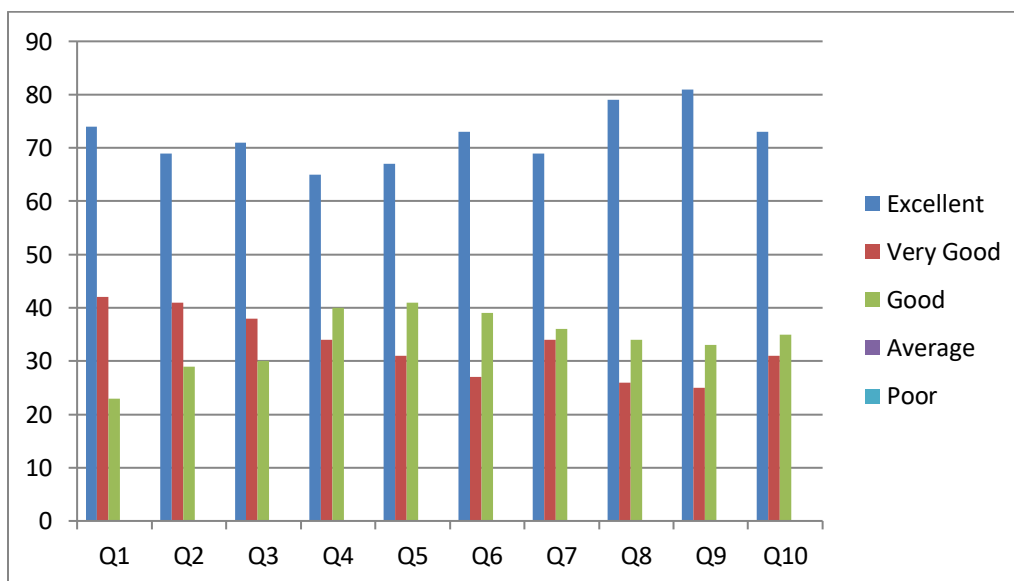
ISO 9001:2008; ISO 14001:2004 & OHSAS 18001:2007 Certified Institution.

NH-5, Anakapalle – 531002, Visakhapatnam, A.P.

Phone: 08924-221111 / 221122/9963981111, e-mail: info@diet.edu.in

STUDENTS FEEDBACK

SRL NO	Question	Excellent	Very Good	Good	Average	Poor
1	How do you rate the sequence of the Courses that you have studied are in sequence to what you have studied in the previous semester?	74	42	23	0	0
2	How do you rate the syllabus of the courses that you have studied in relation to the competencies expected out of the course?	69	41	29	0	0
3	How do you rate the relevance of the units in Syllabus relevant to the course?	71	38	30	0	0
4	How do you rate the sequence of the units in the course?	65	34	40	0	0
5	How do you rate the allocation of the credits to the courses?	67	31	41	0	0
6	How do you rate the distribution of the contact hours among the course components (L-T-P)?	73	27	39	0	0
7	How do you rate the offering of the electives in terms of their relevance to the specialization streams?	69	34	36	0	0
8	How do you rate the electives offered in relation to the Technological advancements?	79	26	34	0	0
9	How do you rate the relevance of the Text Books and reference books by their International recognition to the Courses?	81	25	33	0	0
10	Rate the Size of syllabus in terms of the load on the student	73	31	35	0	0





DADI INSTITUTE OF ENGINEERING & TECHNOLOGY

(Approved by A.I.C.T.E., New Delhi & Affiliated to JNTU, Kakinada)

NAAC ACCREDITED INSTITUTE Recognized under section 2(f) & 12(B) of UGC Act

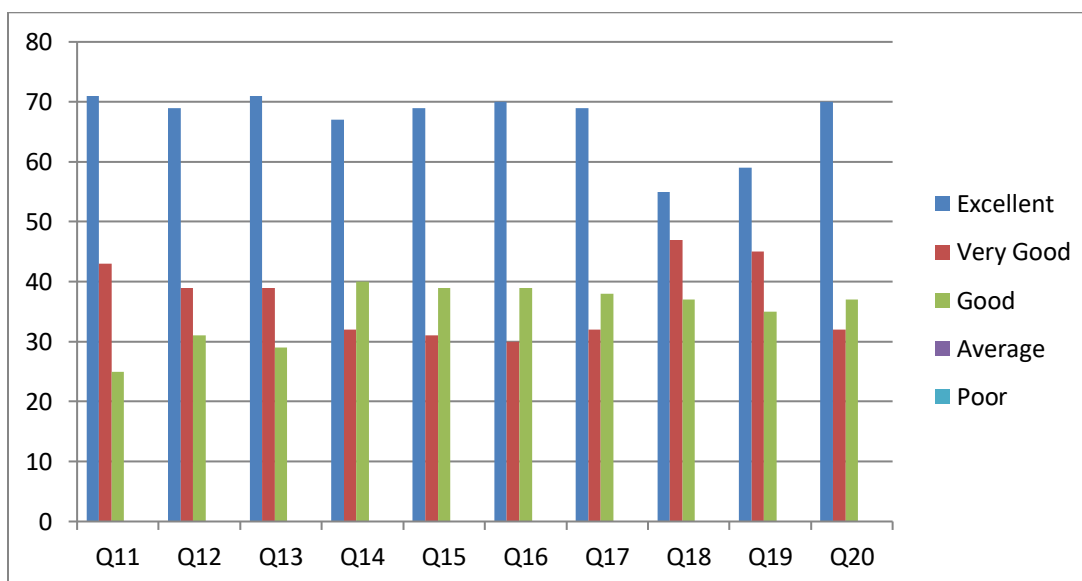
ISO 9001:2008; ISO 14001:2004 & OHSAS 18001:2007 Certified Institution.

NH-5, Anakapalle – 531002, Visakhapatnam, A.P.

Phone: 08924-221111 / 221122/9963981111, e-mail: info@diet.edu.in

STUDENTS FEEDBACK

SRL NO	Question	Excellent	Very Good	Good	Average	Poor
11	Rate the courses in terms of extra learning or self learning considering the design of the courses	71	43	25	0	0
12	Rate the courses in terms of sequence of offering considering whether the preceding courses have been covered.	69	39	31	0	0
13	How do you Rate the loading of the courses in a semester?	71	39	29	0	0
14	How do you rate the evaluation scheme designed for each of the course?	67	32	40	0	0
15	How do you rate the objectives stated for each of the course?	69	31	39	0	0
16	How do you rate competencies expected out of the course?	70	30	39	0	0
17	How do you rate the composition of the courses in terms of Basic science, Engineering science, Humanities, Discipline core, discipline elective, open elective, project etc.?	69	32	38	0	0
18	How do you rate the percentage of courses having LAB components?	55	47	37	0	0
19	How do you rate the domain used for designing the experiments for the LAB components?	59	45	35	0	0
20	How do you rate the experiments in relation to the real life Applications?	70	32	37	0	0





DADI INSTITUTE OF ENGINEERING & TECHNOLOGY

(Approved by A.I.C.T.E., New Delhi & Affiliated to JNTU, Kakinada)

NAAC ACCREDITED INSTITUTE Recognised under section 2(f) & 12(B) of UGC Act

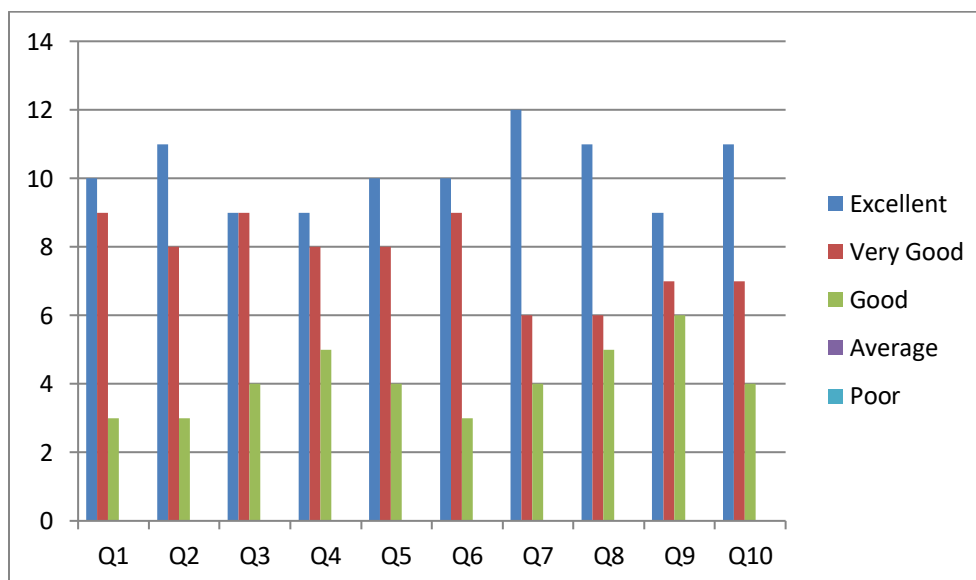
ISO 9001:2008; ISO 14001:2004 & OHSAS 18001:2007 Certified Institution.

NH-5, Anakapalle – 531002, Visakhapatnam, A.P.

Phone: 08924-221111 / 221122/9963981111, e-mail: info@diet.edu.in

TEACHERS FEEDBACK

SRL NO	Question	Excellent	Very Good	Good	Average	Poor
1	How do you rate the sequence of the Courses that you have studied are in sequence to what you have studied in the previous semester?	10	9	3	0	0
2	How do you rate the syllabus of the courses that you have studied in relation to the competencies expected out of the course?	11	8	3	0	0
3	How do you rate the relevance of the units in Syllabus relevant to the course?	9	9	4	0	0
4	How do you rate the sequence of the units in the course?	9	8	5	0	0
5	How do you rate the allocation of the credits to the courses?	10	8	4	0	0
6	How do you rate the distribution of the contact hours among the course components (L-T-P)?	10	9	3	0	0
7	How do you rate the offering of the electives in terms of their relevance to the specialization streams?	12	6	4	0	0
8	How do you rate the electives offered in relation to the Technological advancements?	11	6	5	0	0
9	How do you rate the relevance of the Text Books and reference books by their International recognition to the Courses?	9	7	6	0	0
10	Rate the Size of syllabus in terms of the load on the student	11	7	4	0	0





DADI INSTITUTE OF ENGINEERING & TECHNOLOGY

(Approved by A.I.C.T.E., New Delhi & Affiliated to JNTU, Kakinada)

NAAC ACCREDITED INSTITUTE Recognized under section 2(f) & 12(B) of UGC Act

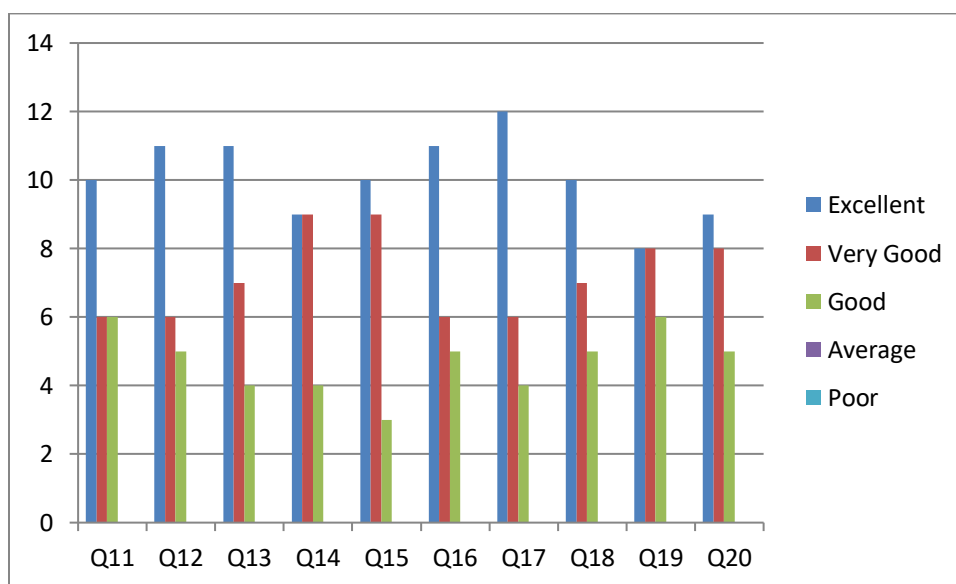
ISO 9001:2008; ISO 14001:2004 & OHSAS 18001:2007 Certified Institution.

NH-5, Anakapalle – 531002, Visakhapatnam, A.P.

Phone: 08924-221111 / 221122/9963981111, e-mail: info@diet.edu.in

1.1.5.F TEACHERS FEEDBACK

SRL NO	Question	Excellent	Very Good	Good	Average	Poor
11	Rate the courses in terms of extra learning or self learning considering the design of the courses	10	6	6	0	0
12	Rate the courses in terms of sequence of offering considering whether the preceding courses have been covered.	11	6	5	0	0
13	How do you Rate the loading of the courses in a semester?	11	7	4	0	0
14	How do you rate the evaluation scheme designed for each of the course?	9	9	4	0	0
15	How do you rate the objectives stated for each of the course?	10	9	3	0	0
16	How do you rate competencies expected out of the course?	11	6	5	0	0
17	How do you rate the composition of the courses in terms of Basic science, Engineering science, Humanities, Discipline core, discipline elective, open elective, project etc.?	12	6	4	0	0
18	How do you rate the percentage of courses having LAB components?	10	7	5	0	0
19	How do you rate the domain used for designing the experiments for the LAB components?	8	8	6	0	0
20	How do you rate the experiments in relation to the real life Applications?	9	8	5	0	0





DADI INSTITUTE OF ENGINEERING & TECHNOLOGY

(Approved by A.I.C.T.E., New Delhi & Affiliated to JNTU, Kakinada)

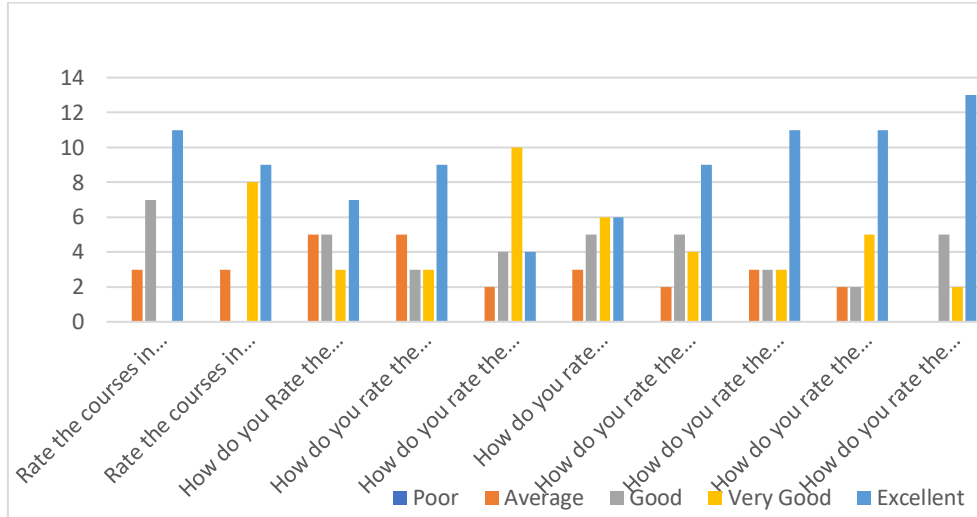
NAAC ACCREDITED INSTITUTE Recognised under section 2(f) & 12(B) of UGC Act

ISO 9001:2008; ISO 14001:2004 & OHSAS 18001:2007 Certified Institution.

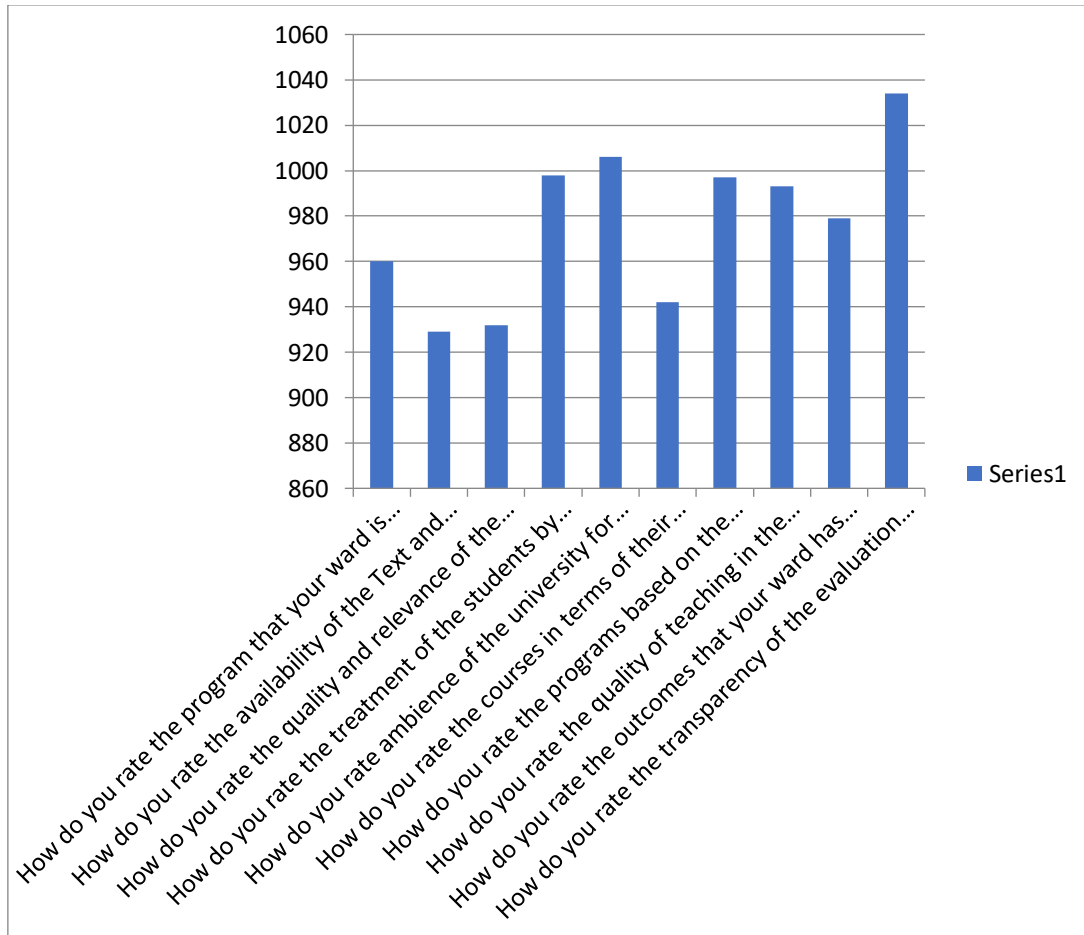
NH-5, Anapalle – 531002, Visakhapatnam, A.P.

Phone: 08924-221111 / 221122/9963981111, e-mail: info@diet.edu.in

CSE Department EMPLOYEMENT FEED BACK



Parent Feedback





DADI INSTITUTE OF ENGINEERING & TECHNOLOGY

(Approved by A.I.C.T.E., New Delhi & Affiliated to JNTU, Kakinada)

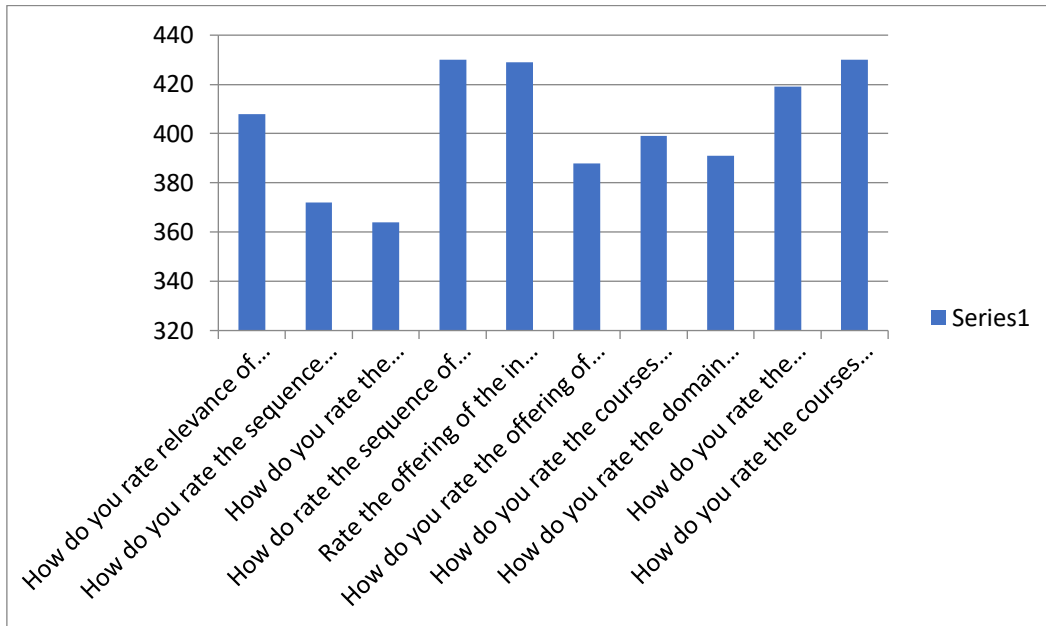
NAAC ACCREDITED INSTITUTE Recognised under section 2(f) & 12(B) of UGC Act

ISO 9001:2008; ISO 14001:2004 & OHSAS 18001:2007 Certified Institution.

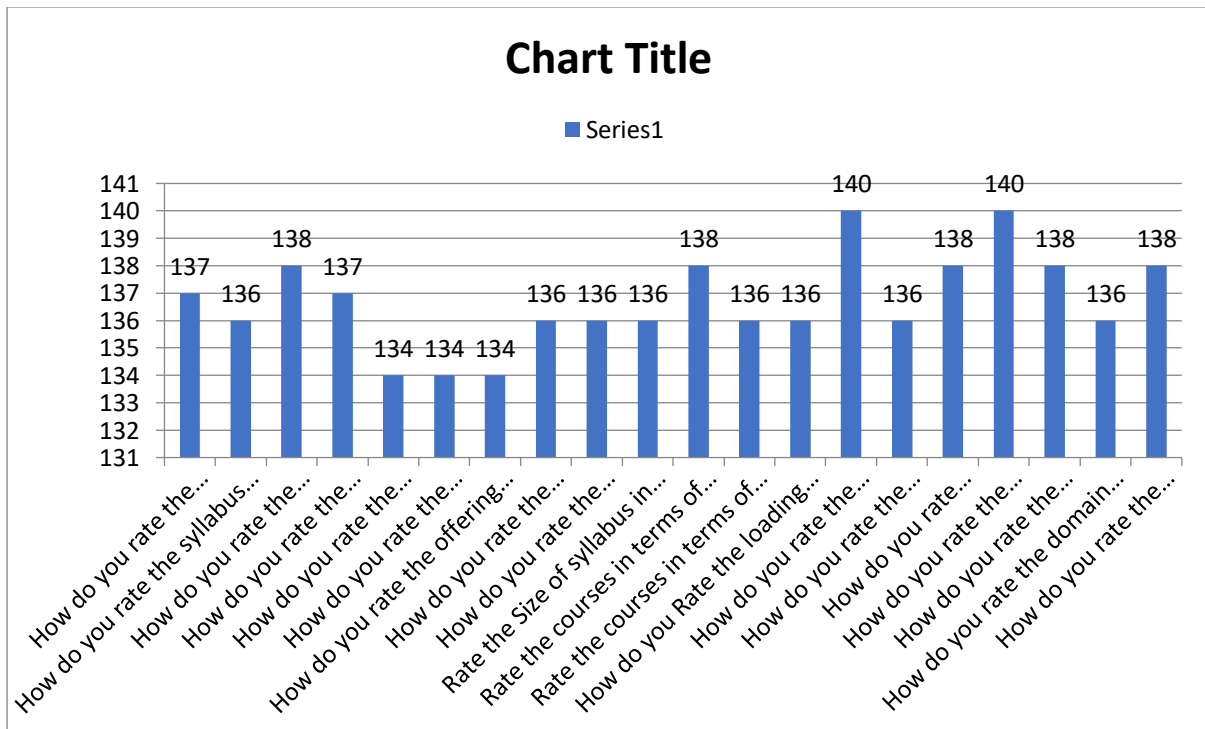
NH-5, Anapalle – 531002, Visakhapatnam, A.P.

Phone: 08924-221111 / 221122/9963981111, e-mail: info@diet.edu.in

Alumni Feedback



Teachers Feedback





DADI INSTITUTE OF ENGINEERING & TECHNOLOGY

(Approved by A.I.C.T.E., New Delhi & Affiliated to JNTU, Kakinada)

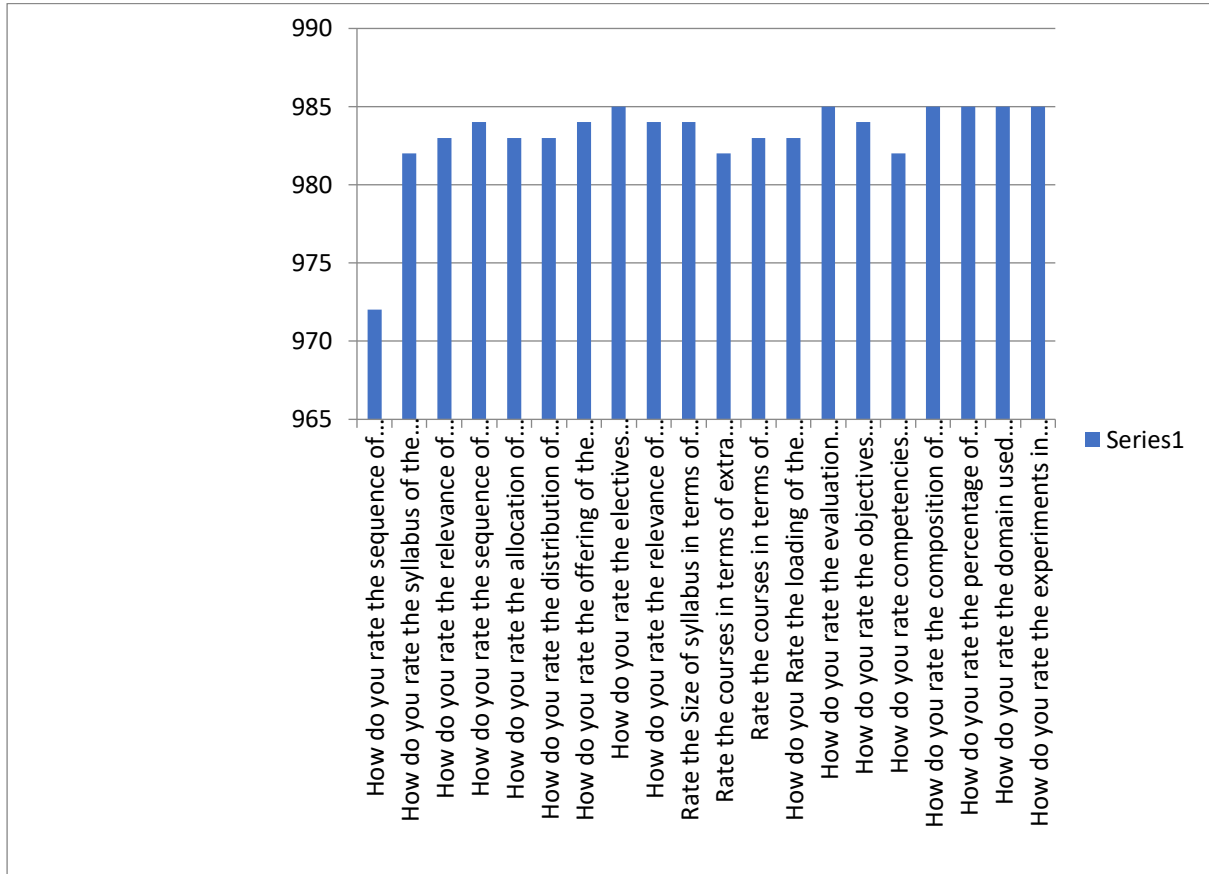
NAAC ACCREDITED INSTITUTE Recognised under section 2(f) & 12(B) of UGC Act

ISO 9001:2008; ISO 14001:2004 & OHSAS 18001:2007 Certified Institution.

NH-5, Anakapalle – 531002, Visakhapatnam, A.P.

Phone: 08924-221111 / 221122/9963981111, e-mail: info@diet.edu.in

Student Feedback





DADI INSTITUTE OF ENGINEERING & TECHNOLOGY

(Approved by A.I.C.T.E., New Delhi & Affiliated to JNTU, Kakinada)

NAAC ACCREDITED INSTITUTE Recognised under section 2(f) & 12(B) of UGC Act

ISO 9001:2008; ISO 14001:2004 & OHSAS 18001:2007 Certified Institution.

NH-5, Anakapalle – 531002, Visakhapatnam, A.P.

Phone: 08924-221111 / 221122/9963981111, e-mail: info@diet.edu.in

ECE Department

ALUMNI Feedback on the curriculum 2020-21

Department Code	Department Name	Program Code	Program name

Student Regd. No.	Parent Name	Date of Feed Back	Program Year/Semester	Regulation

SRL NO	Question	Excellent	Very Good	Good	Average	Poor
1	How do you rate relevance of the courses in relation to the program?	23	19	35	12	4
2	How do you rate the sequence of the courses included into the programs?	22	15	31	21	0
3	How do you rate the competencies in relation to the course content?	30	3	26	15	3
4	How do rate the sequence of the topics in the units?	28	10	29	14	3
5	Rate the offering of the in relation to the specialization streams?	28	11	32	13	1
6	How do you rate the offering of the electives in relation to the Technological advancements?	25	11	28	21	0
7	How do you rate the courses which are skills related suiting to the Industry included into the programs?	28	20	33	11	2
8	How do you rate the domain used for designing the experiments in terms of the suitability of the Tools to the domain?	28	10	34	12	0
9	How do you rate the experiments in terms of their relevance to the real life application?	29	7	28	15	2
10	How do you rate the courses that you have learnt in relation to your current Job	19	19	33	21	1



DADI INSTITUTE OF ENGINEERING & TECHNOLOGY

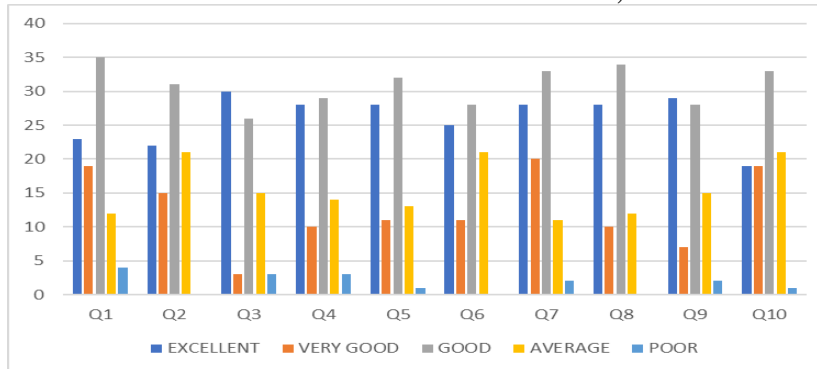
(Approved by A.I.C.T.E., New Delhi & Affiliated to JNTU, Kakinada)

NAAC ACCREDITED INSTITUTE Recognised under section 2(f) & 12(B) of UGC Act

ISO 9001:2008; ISO 14001:2004 & OHSAS 18001:2007 Certified Institution.

NH-5, Anakapalle – 531002, Visakhapatnam, A.P.

Phone: 08924-221111 / 221122/9963981111, e-mail: info@diet.edu.in





INSTITUTE OF ENGINEERING & TECHNOLOGY

Approved by A.I.C.T.E., New Delhi & Affiliated to JNTU, Kakinada
ISO 9001:2008; ISO 14001:2004 & OHSAS 18001:2007 Certified Institution.

NH-5, Anakapalle – 531002, Visakhapatnam, A.P.

Phone: 08924-221111 / 221122/9963981111, e-mail: info@diet.edu.in

Students Feedback on the curriculum 2020-21

Department Code	Department Name	Program Code	Program name

Student Regd. No.	Parent Name	Date of Feed Back	Program Year/Semester	Regulation

SRL NO	Question	Excellent	Very Good	Good	Average	Poor
1	How do you rate the sequence of the Courses that you have studied are in sequence to what you have studied in the previous semester?	39	12	29	30	2
2	How do you rate the syllabus of the courses that you have studied in relation to the competencies expected out of the course?	41	19	43	12	4
3	How do you rate the relevance of the units in Syllabus relevant there?	31	16	44	25	0
4	How do you rate the sequence of the units in the course?	41	8	34	22	3
5	How do you rate the allocation of the credits to the courses?	37	10	41	19	3
6	How do you rate the distribution of the contact hours among the course components (E-T-P)?	34	14	43	22	1
7	How do you rate the offering of the electives in terms of their relevance to the specialization streams?	38	11	38	24	0
8	How do you rate the electives offered in relation to the Technological advancements?	38	23	41	18	3
9	How do you rate the relevance of the Text Books and reference books by their international recognition to the Courses.	37	16	46	16	1
10	Rate the size of syllabus in terms of the load on the student	37	12	41	20	2

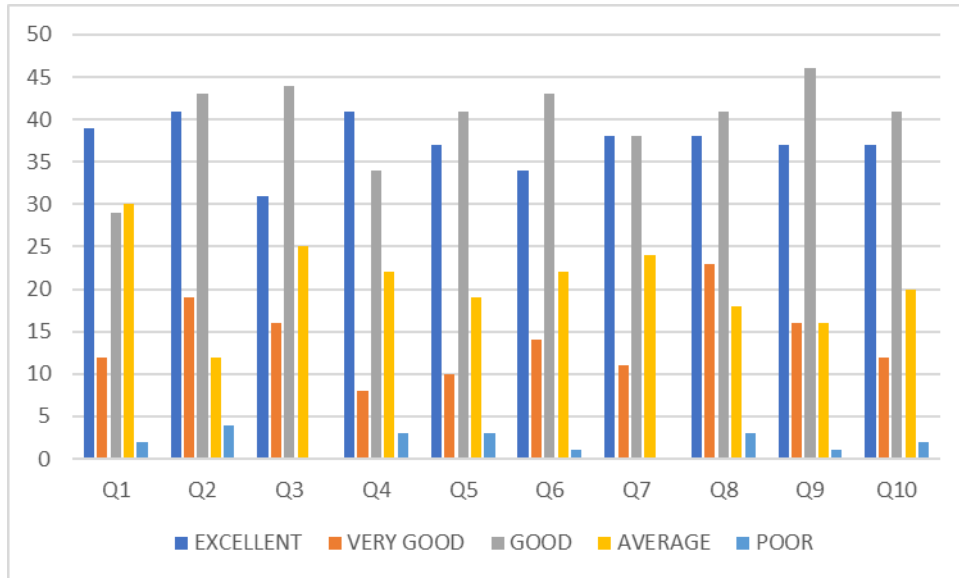


INSTITUTE OF ENGINEERING & TECHNOLOGY

Approved by A.I.C.T.E., New Delhi & Affiliated to JNTU, Kakinada)
ISO 9001:2008; ISO 14001:2004 & OHSAS 18001:2007 Certified Institution.

NH-5, Anakapalle – 531002, Visakhapatnam, A.P.

Phone: 08924-221111 / 221122/9963981111, e-mail: info@diet.edu.in





INSTITUTE OF ENGINEERING & TECHNOLOGY

Approved by A.I.C.T.E., New Delhi & Affiliated to JNTU, Kakinada)
ISO 9001:2008; ISO 14001:2004 & OHSAS 18001:2007 Certified Institution.

NH-5, Anakapalle – 531002, Visakhapatnam, A.P.

Phone: 08924-221111 / 221122/9963981111, e-mail:info@diet.edu.in

SRL NO	Question	Excellent	Very Good	Good	Average	Poor
11	Rate the courses in terms of extra learning or self learning considering the design of the courses	29	21	42	26	3
12	Rate the courses sequence of offering considering whether the preceding courses have been covered	35	16	41	21	3
13	How do you rate the loading of the course in a semester?	28	8	36	31	5
14	How you the evaluation scheme designed for each of the course?	41	14	40	17	2
15	How do you rate the objectives stated for each of the course?	51	11	30	18	1
16	How do you rate competencies expected out of the course?	39	20	42	15	4
17	How do you rate the composition of the courses in terms of Basic science, Engineering science, Humanities, Discipline core, discipline elective, open elective project etc.?	43	7	40	15	2
18	How do you rate the percentage of courses having LAB components?	46	12	40	13	1
19	How do you rate the domain used for designing the experiments for the LAB components?	40	13	39	19	2
20	How do you rate the experiments in relation to the real life Applications?	50	11	34	15	1



INSTITUTE OF ENGINEERING & TECHNOLOGY

Approved by A.I.C.T.E., New Delhi & Affiliated to JNTU, Kakinada)
ISO 9001:2008; ISO 14001:2004 & OHSAS 18001:2007 Certified Institution.

NH-5, Anakapalle – 531002, Visakhapatnam, A.P.

Phone: 08924-221111 / 221122/9963981111, e-mail: info@diet.edu.in





INSTITUTE OF ENGINEERING & TECHNOLOGY

Approved by A.I.C.T.E., New Delhi & Affiliated to JNTU, Kakinada)
001:2008; ISO 14001:2004 & OHSAS 18001:2007 Certified Institution.

NH-5, Anakapalle – 531002, Visakhapatnam, A.P.

Phone: 08924-221111 / 221122/9963981111, e-mail:info@diet.edu.in

Parents Feedback on the curriculum 2020-21

Department Code	Department Name	Program Code	Program name

Student Regd. No.	Parent Name	Date of Feed Back	Program Year/Semester	Regulation

SRL NO	Question	Excellent	Very Good	Good	Average	Poor
1	How do you rate the program that your ward is undergoing in terms of the load of the courses in different semesters?	36	13	34	29	1
2	How do you rate the availability of the Text and reference books in the Market?	37	19	46	15	2
3	How do you rate the quality and relevance of the courses included into the semester?	35	19	45	20	0
4	How do you rate the treatment of the students by the faculty irrespective of the background of the student that includes Gender, cast, community creed etc. in teaching and evaluation?	42	10	27	27	4
5	How do you rate ambience of the university for effective delivery of the academic programs?	35	13	44	18	3
6	How do you rate the courses in terms of their relevance to the latest technologies or future technologies?	30	19	47	31	2
7	How do you rate the programs based on the comfort of your ward in coping with the workload?	43	4	32	22	3
8	How do you rate the quality of teaching in the university?	40	5	36	22	2
9	How do you rate the outcomes that your ward has achieved from the courses	42	9	36	18	4
10	How do you rate the transparency of the evaluation system in the University?	35	14	39	24	2

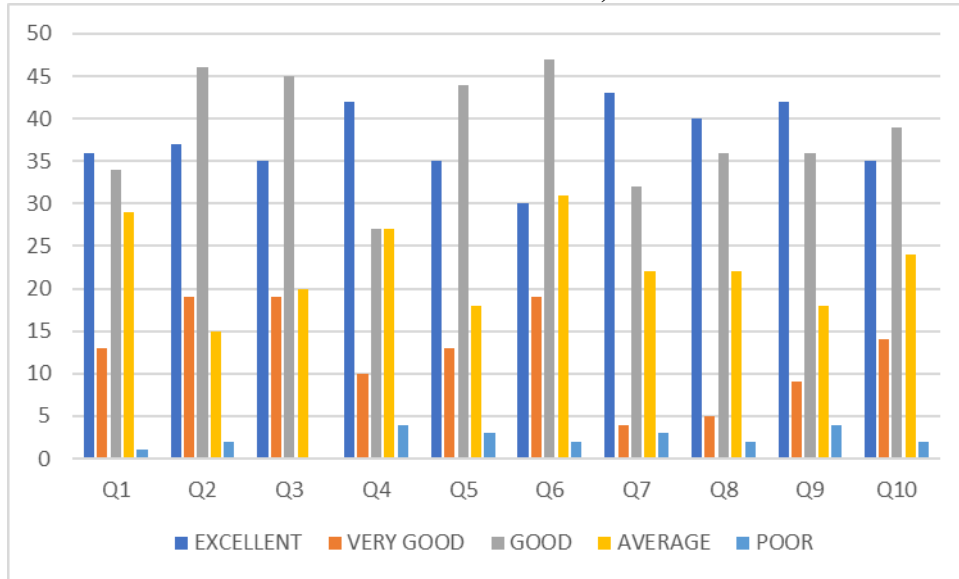


INSTITUTE OF ENGINEERING & TECHNOLOGY

Approved by A.I.C.T.E., New Delhi & Affiliated to JNTU, Kakinada)
ISO 9001:2008; ISO 14001:2004 & OHSAS 18001:2007 Certified Institution.

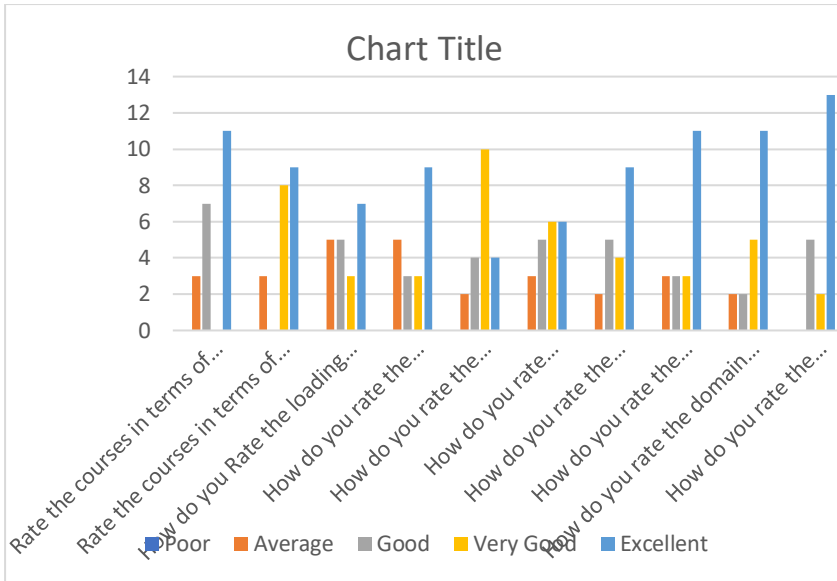
NH-5, Anakapalle – 531002, Visakhapatnam, A.P.

Phone: 08924-221111 / 221122/9963981111, e-mail: info@diet.edu.in



Faculty Feedback on Curriculum 2020-21

Q.NO	Poor	Average	Good	Very Good	Excellent
How do you rate the sequence of the Courses that you have studied are in sequence to what you have studied in the previous semester?	0	4	7	9	11
How do you rate the syllabus of the courses that you have studied in relation to the competencies expected out of the course?	0	2	4	11	14
How do you rate the relevance of the units in Syllabus relevant to the course?	0	5	8	6	12
How do you rate the sequence of the units in the course?	0	5	8	5	13
How do you rate the allocation of the credits to the courses?	0	4	4	6	17
How do you rate the distribution of the contact hours among the course components (L-T-P)?	0	4	8	9	10
How do you rate the offering of the electives in terms of their relevance to the specialization streams?	0	3	6	7	14
How do you rate the electives offered in relation to the Technological advancements?	0	4	8	7	12
How do you rate the relevance of the Text Books and reference books by their International recognition to the Courses?	0	4	6	10	11
Rate the Size of syllabus in terms of the load on the student	0	2	8	9	12
Rate the courses in terms of extra learning or self learning considering the design of the courses	0	4	8	5	14
Rate the courses in terms of sequence of offering considering whether the preceding courses have been covered.	0	4	6	9	12
How do you Rate the loading of the courses in a semester?	0	6	5	9	11
How do you rate the evaluation scheme designed for each of the course?	0	6	6	8	11
How do you rate the objectives stated for each of the course?	0	5	6	13	7
How do you rate competencies expected out of the course?	1	6	6	8	10
How do you rate the composition of the courses in terms of Basic science, Engineering science, Humanities, Discipline core, discipline elective, open elective, project etc.?	0	3	8	8	12
How do you rate the percentage of courses having LAB components?	0	5	6	7	13
How do you rate the domain used for designing the experiments for the LAB components?	0	4	6	9	12
How do you rate the experiments in relation to the real life Applications?	0	1	7	10	13





DADI INSTITUTE OF ENGINEERING & TECHNOLOGY

(Approved by A.I.C.T.E., New Delhi & Affiliated to JNTU, Kakinada)

NAAC ACCREDITED INSTITUTE Recognised under section 2(f) & 12(B) of UGC Act

ISO 9001:2008; ISO 14001:2004 & OHSAS 18001:2007 Certified Institution.

NH-5, Anakapalle – 531002, Visakhapatnam, A.P.

Phone: 08924-221111 / 221122/9963981111, e-mail: info@diet.edu.in

EEE Department

Student Feedback on Curriculum-2020-21

Department Code	Department Name	Program Code	Program name
			B.Tech

Student Regd. No.	Student Name	Date of Feedback	Program Year/ Semester	Regulation

Sl. No.	Question	Excellent	Very Good	Good	Average	Poor
1	How do you rate the sequence of the Courses that you have studied in sequence to what you have studied in the previous semester?	15	9	26	10	0
2	How do you rate the syllabus of the courses that you have studied in relation to the competencies expected out of the course?	23	25	6	6	0
3	How do you rate the relevance of the units in Syllabus relevant to the course?	25	14	15	5	1
4	How do you rate the sequence of the units in the course?	32	15	8	5	0
5	How do you rate the allocation of the credits to the courses?	30	21	6	1	2
6	How do you rate the distribution of the contact hours among the course components (L-T-P)?	15	8	15	12	10
7	How do you rate the offering of the electives in terms of their relevance to the specialization streams?	12	8	10	15	15
8	How do you rate the electives offered in relation to the Technological advancements?	9	10	12	10	19
9	How do you rate the relevance of the Text Books and reference books by their International recognition to the Courses?	16	14	9	9	12

Student Feedback on Curriculum-2020-21

NAAC Criteria: 1.1.5D



DADI INSTITUTE OF ENGINEERING & TECHNOLOGY

(Approved by A.I.C.T.E., New Delhi & Affiliated to JNTU, Kakinada)

NAAC ACCREDITED INSTITUTE Recognised under section 2(f) & 12(B) of UGC Act

ISO 9001:2008; ISO 14001:2004 & OHSAS 18001:2007 Certified Institution.

NH-5, Anakapalle – 531002, Visakhapatnam, A.P.

Phone: 08924-221111 / 221122/9963981111, e-mail: info@diet.edu.in

Sl. No.	Question	Excellent	Very Good	Good	Average	Poor
10	Rate the Size of syllabus in terms of the load on the student	15	9	26	10	0
11	Rate the courses in terms of extra learning or self learning considering the design of the courses	23	25	6	6	0
12	Rate the courses in terms of sequence of offering considering whether the preceding courses have been covered.	25	14	15	5	1
13	How do you Rate the loading of the courses in a semester?	32	15	8	5	0
14	How do you rate the evaluation scheme designed for each of the courses?	30	21	6	1	2
15	How do you rate the objectives stated for each of the courses?	15	8	15	12	10
16	How do you rate competencies expected out of the course?	12	8	10	15	15
17	How do you rate the composition of the courses in terms of Basic science, Engineering science, Humanities, Discipline core, discipline elective, open elective, project etc.?	9	10	12	10	19
18	How do you rate the percentage of courses having LAB components?	16	14	9	9	12
19	How do you rate the domain used for designing the experiments for the LAB components?	20	12	18	10	15
20	How do you rate the experiments in relation to the real life Applications?	14	12	18	11	15



DADI INSTITUTE OF ENGINEERING & TECHNOLOGY

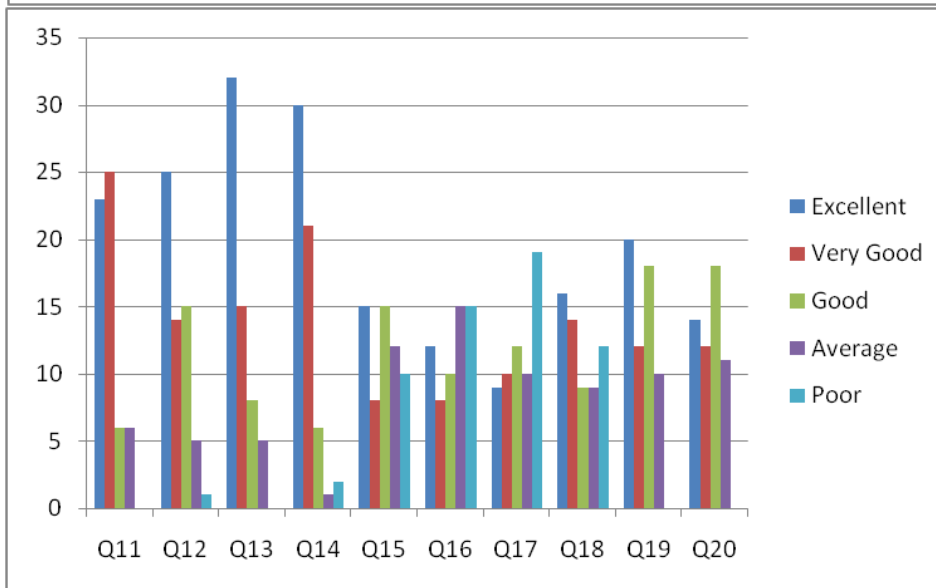
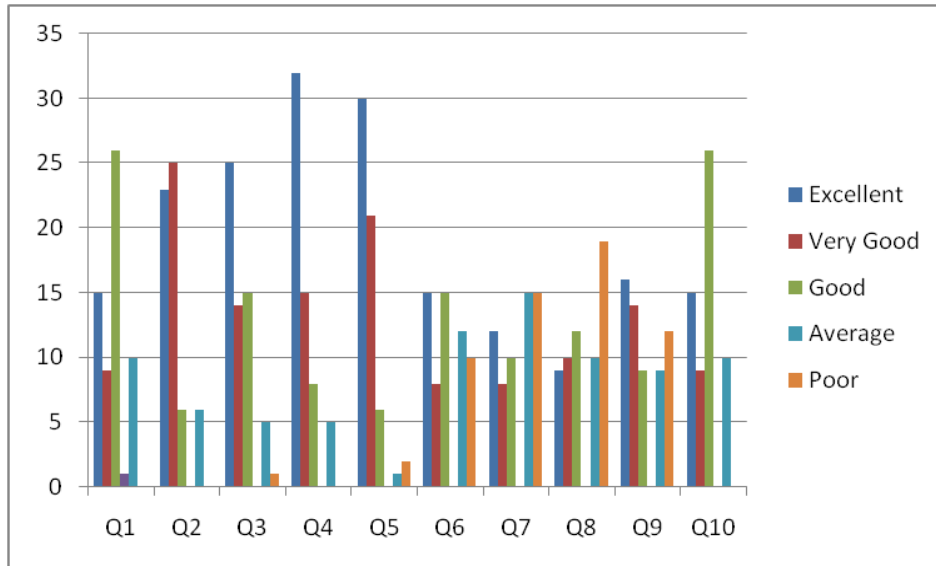
(Approved by A.I.C.T.E., New Delhi & Affiliated to JNTU, Kakinada)

NAAC ACCREDITED INSTITUTE Recognised under section 2(f) & 12(B) of UGC Act

ISO 9001:2008; ISO 14001:2004 & OHSAS 18001:2007 Certified Institution.

NH-5, Anakapalle – 531002, Visakhapatnam, A.P.

Phone: 08924-221111 / 221122/9963981111, e-mail: info@diet.edu.in





DADI INSTITUTE OF ENGINEERING & TECHNOLOGY

(Approved by A.I.C.T.E., New Delhi & Affiliated to JNTU, Kakinada)

NAAC ACCREDITED INSTITUTE Recognised under section 2(f) & 12(B) of UGC Act

ISO 9001:2008; ISO 14001:2004 & OHSAS 18001:2007 Certified Institution.

NH-5, Anakapalle – 531002, Visakhapatnam, A.P.

Phone: 08924-221111 / 221122/9963981111, e-mail: info@diet.edu.in

Teacher FeedBack On Curriculum-2020-21

Department Code	Department Name	Program Code	Program name	
			B.Tech	
Student Regd. No.	Student Name	Date of Feedback	Program Year/ Semester	Regulation



DADI INSTITUTE OF ENGINEERING & TECHNOLOGY

(Approved by A.I.C.T.E., New Delhi & Affiliated to JNTU, Kakinada)

NAAC ACCREDITED INSTITUTE Recognised under section 2(f) & 12(B) of UGC Act

ISO 9001:2008; ISO 14001:2004 & OHSAS 18001:2007 Certified Institution.

NH-5, Anakapalle – 531002, Visakhapatnam, A.P.

Phone: 08924-221111 / 221122/9963981111, e-mail: info@diet.edu.in

Sl. No.	Question	Excellent	Very Good	Good	Average	Poor
1	How do you rate the sequence of the Courses that you have taught in sequence to what you have taught in the previous semester?	4	3	2	1	0
2	How do you rate the syllabus of the courses that you have taught in relation to the competencies expected out of the course?	4	2	2	2	0
3	How do you rate the relevance of the units in Syllabus relevant to the course?	6	2	1	1	0
4	How do you rate the sequence of the units in the course?	7	1	1	1	0
5	How do you rate the allocation of the credits to the courses?	8	1	1	0	0
6	How do you rate the distribution of the contact hours among the course components (L-T-P)?	6	2	1	1	0
7	How do you rate the offering of the electives in terms of their relevance to the specialization streams?	7	1	1	1	0
8	How do you rate the electives offered in relation to the Technological advancements?	2	2	3	2	1
9	How do you rate the relevance of the Text Books and reference books by their International recognition to the Courses?	5	2	1	1	1

Teacher Feedback On Curriculum-2020-21

NAAC Criteria: 1.1.5F



DADI INSTITUTE OF ENGINEERING & TECHNOLOGY

(Approved by A.I.C.T.E., New Delhi & Affiliated to JNTU, Kakinada)

NAAC ACCREDITED INSTITUTE Recognised under section 2(f) & 12(B) of UGC Act

ISO 9001:2008; ISO 14001:2004 & OHSAS 18001:2007 Certified Institution.

NH-5, Anakapalle – 531002, Visakhapatnam, A.P.

Phone: 08924-221111 / 221122/9963981111, e-mail: info@diet.edu.in

Sl. No.	Question	Excellent	Very Good	Good	Average	Poor
10	Rate the Size of syllabus in terms of the load on the student	4	3	1	2	0
11	Rate the courses in terms of extra learning or self learning considering the design of the courses	6	2	1	1	0
12	Rate the courses in terms of sequence of offering considering whether the preceding courses have been covered.	5	2	2	1	0
13	How do you Rate the loading of the courses in a semester?	2	2	4	2	0
14	How do you rate the evaluation scheme designed for each of the course?	5	2	2	1	0
15	How do you rate the objectives stated for each of the courses?	8	1	1	0	0
16	How do you rate competencies expected out of the course?	6	2	1	1	0
17	How do you rate the composition of the courses in terms of Basic science, Engineering science, Humanities, Discipline core, discipline elective, open elective, project etc.?	5	2	2	1	0
18	How do you rate the percentage of courses having LAB components?	5	2	1	1	1
19	How do you rate the domain used for designing the experiments for the LAB components?	4	3	1	1	1
20	How do you rate the experiments in relation to the real life Applications?	3	3	2	1	1



DADI INSTITUTE OF ENGINEERING & TECHNOLOGY

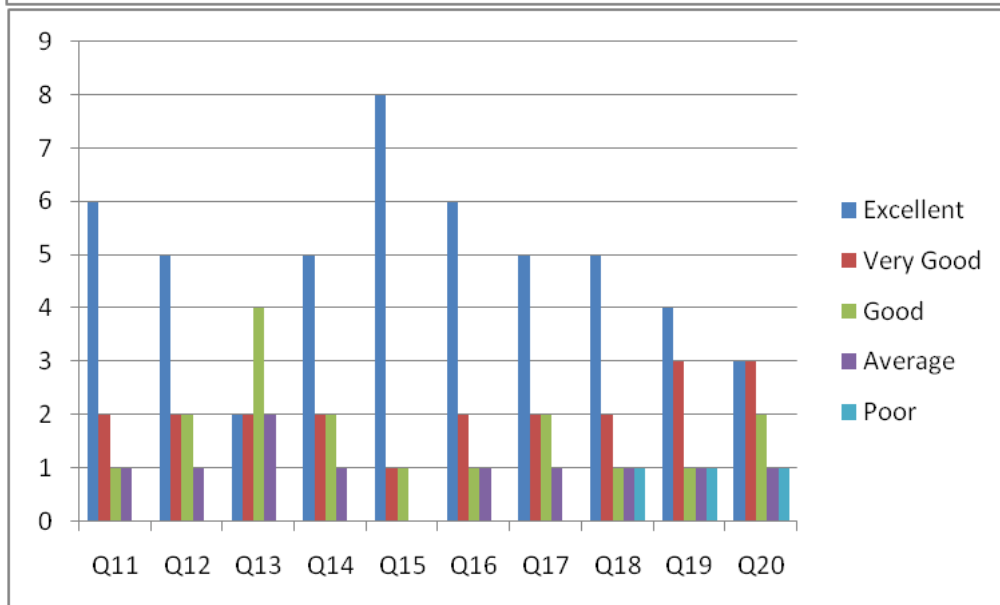
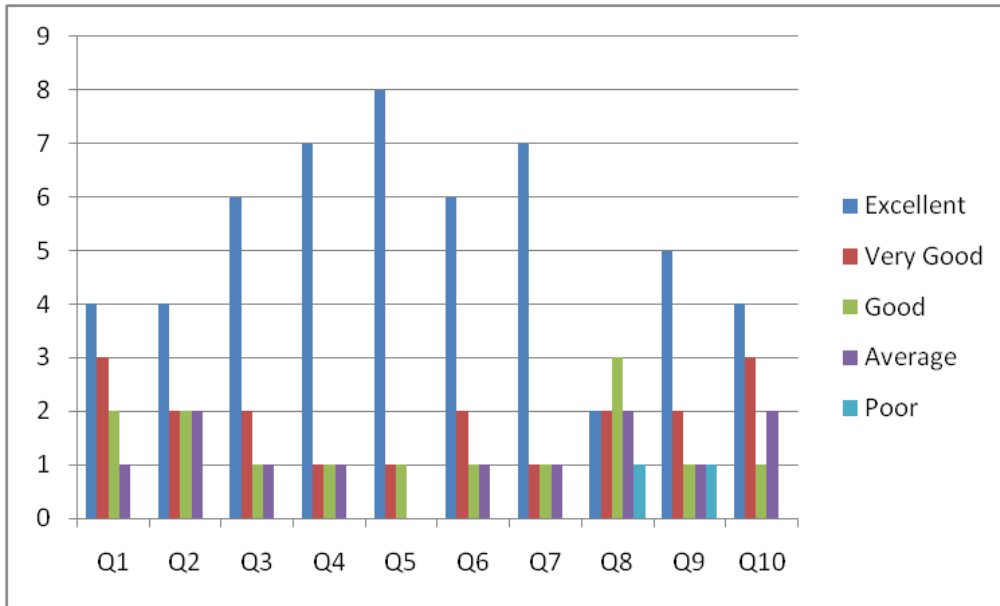
(Approved by A.I.C.T.E., New Delhi & Affiliated to JNTU, Kakinada)

NAAC ACCREDITED INSTITUTE Recognised under section 2(f) & 12(B) of UGC Act

ISO 9001:2008; ISO 14001:2004 & OHSAS 18001:2007 Certified Institution.

NH-5, Anakapalle – 531002, Visakhapatnam, A.P.

Phone: 08924-221111 / 221122/9963981111, e-mail: info@diet.edu.in





DADI INSTITUTE OF ENGINEERING & TECHNOLOGY

(Approved by A.I.C.T.E., New Delhi & Affiliated to JNTU, Kakinada)

NAAC ACCREDITED INSTITUTE Recognised under section 2(f) & 12(B) of UGC Act

ISO 9001:2008; ISO 14001:2004 & OHSAS 18001:2007 Certified Institution.

NH-5, Anakapalle – 531002, Visakhapatnam, A.P.

Phone: 08924-221111 / 221122/9963981111, e-mail: info@diet.edu.in

Student FeedBack On Curriculum-2019-20

Department Code	Department Name	Program Code	Program name
			B.Tech

Student Regd. No.	Student Name	Date of Feedback	Program Year/ Semester	Regulation

Sl. No.	Question	Excellent	Very Good	Good	Average	Poor
1	How do you rate the relevance of the courses in relation to the program?	1	1	0	0	0
2	How do you rate the sufficiency of the courses related to industry that are included in the program?	0	1	1	0	0
3	How do you rate the competencies in relation to the course content?	0	1	1	0	0
4	How do you rate the sequence of the units in the syllabus?	1	1	0	0	0
5	How do you rate the relevance of the topics to the Industry?	0	1	1	0	0
6	Rate the offering of the courses in relation to the specialization streams?	0	1	1	0	0



DADI INSTITUTE OF ENGINEERING & TECHNOLOGY

(Approved by A.I.C.T.E., New Delhi & Affiliated to JNTU, Kakinada)

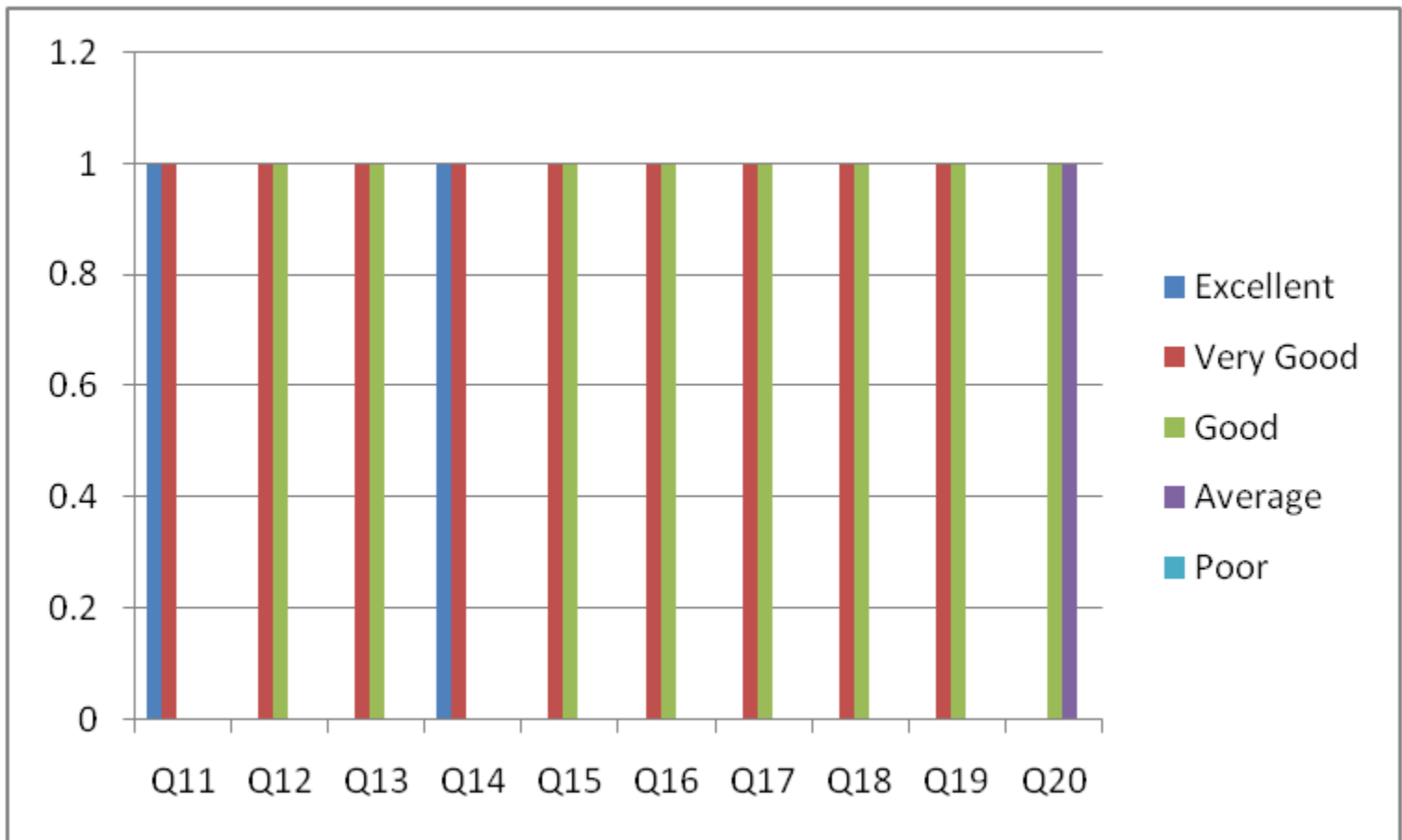
NAAC ACCREDITED INSTITUTE Recognised under section 2(f) & 12(B) of UGC Act

ISO 9001:2008; ISO 14001:2004 & OHSAS 18001:2007 Certified Institution.

NH-5, Anakapalle – 531002, Visakhapatnam, A.P.

Phone: 08924-221111 / 221122/9963981111, e-mail: info@diet.edu.in

7	How do you rate the offering of the electives in relation to the Technological advancements?	0	1	1	0	0
8	How do you rate the courses which are skills related suiting to the Industry included into the programs?	0	1	1	0	0
9	How do you rate the applicability of the domains and the tools used for designing the experiments in terms of existing practices in the Industry?	0	1	1	0	0
10	How do you rate the experiments in terms of their relevance to the real life application?	0	0	1	1	0





DADI INSTITUTE OF ENGINEERING & TECHNOLOGY

(Approved by A.I.C.T.E., New Delhi & Affiliated to JNTU, Kakinada)

NAAC ACCREDITED INSTITUTE Recognised under section 2(f) & 12(B) of UGC Act

ISO 9001:2008; ISO 14001:2004 & OHSAS 18001:2007 Certified Institution.

NH-5, Anakapalle – 531002, Visakhapatnam, A.P.

Phone: 08924-221111 / 221122/9963981111, e-mail: info@diet.edu.in

Parent Feedback on Curriculum- 2020-21

Department Code	Department Name	Program Code	Program name
-----------------	-----------------	--------------	--------------

Alumni name & Regd No.	Name of the Organization	Date of Feedback	Program Year Semester	Regulation
------------------------	--------------------------	------------------	-----------------------	------------

Sl. No.	Question	Excellent	Very Good	Good	Average	Poor
1	How do you rate the program that your ward is undergoing in terms of the load of the courses in different semesters?	12	7	10	6	0
2	How do you rate the availability of the Text and reference books in the Market?	13	14	4	4	0
3	How do you rate the quality and relevance of the courses included into the semester?	14	10	7	3	1



DADI INSTITUTE OF ENGINEERING & TECHNOLOGY

(Approved by A.I.C.T.E., New Delhi & Affiliated to JNTU, Kakinada)

NAAC ACCREDITED INSTITUTE Recognised under section 2(f) & 12(B) of UGC Act

ISO 9001:2008; ISO 14001:2004 & OHSAS 18001:2007 Certified Institution.

NH-5, Anakapalle – 531002, Visakhapatnam, A.P.

Phone: 08924-221111 / 221122/9963981111, e-mail: info@diet.edu.in

4	How do you rate the treatment of the students by the faculty irrespective of the background of the student that includes Gender, cast, community creed etc. in teaching and evaluation?	12	12	6	5	0
5	How do you rate the ambience of the university for effective delivery of the academic programs?	15	11	6	1	2
6	How do you rate the courses in terms of their relevance to the latest technologies or future technologies?	10	8	7	6	4
7	How do you rate the programs based on the comfort of your ward in coping with the workload?	9	8	8	5	5
8	How do you rate the quality of teaching in the university?	6	8	4	8	9
9	How do you rate the outcomes that your ward has achieved from the courses	10	10	6	4	5
10	How do you rate the transparency of the evaluation system in the University?	10	9	12	4	0



DADI INSTITUTE OF ENGINEERING & TECHNOLOGY

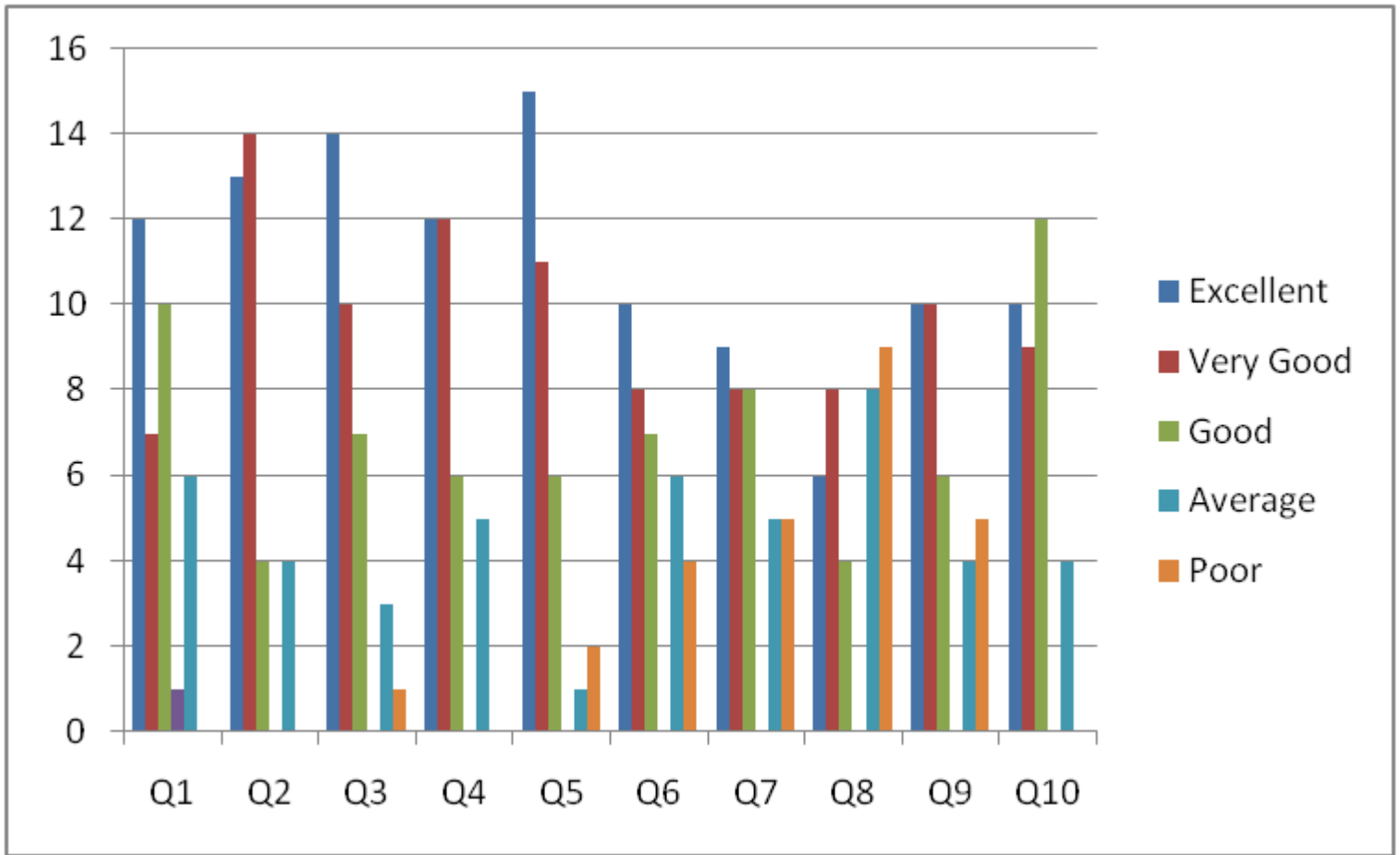
(Approved by A.I.C.T.E., New Delhi & Affiliated to JNTU, Kakinada)

NAAC ACCREDITED INSTITUTE Recognised under section 2(f) & 12(B) of UGC Act

ISO 9001:2008; ISO 14001:2004 & OHSAS 18001:2007 Certified Institution.

NH-5, Anakapalle – 531002, Visakhapatnam, A.P.

Phone: 08924-221111 / 221122/9963981111, e-mail: info@diet.edu.in





DADI INSTITUTE OF ENGINEERING & TECHNOLOGY

(Approved by A.I.C.T.E., New Delhi & Affiliated to JNTU, Kakinada)

NAAC ACCREDITED INSTITUTE Recognised under section 2(f) & 12(B) of UGC Act

ISO 9001:2008; ISO 14001:2004 & OHSAS 18001:2007 Certified Institution.

NH-5, Anakapalle – 531002, Visakhapatnam, A.P.

Phone: 08924-221111 / 221122/9963981111, e-mail: info@diet.edu.in

Alumni Feedback on Curriculum - 2020-21

Department Code	Department Name	Program Code	Program name	
Alumni name & Regd No.	Name of the Organization	Date of Feedback	Program Year Semester	Regulation

Sl. No.	Question	Excellent	Very Good	Good	Average	Poor
1	How do you rate the relevance of the courses in relation to the program?	15	9	26	10	0
2	How do you rate the sequence of the courses included into the programs?	23	25	6	6	0
3	How do you rate the competencies in relation to the course content?	25	14	15	5	1
4	How do you rate the sequence of the topics in the units?	32	15	8	5	0
5	Rate the offering of the in relation to the specialization streams?	30	21	6	1	2
6	How do you rate the offering of the electives in relation to the Technological advancements?	15	8	15	12	10
7	How do you rate the courses which are skills related suiting to the Industry included into the programs?	12	8	10	15	15
8	How do you rate the domain used for designing the experiments in terms of the suitability of the Tools to the domain?	9	10	12	10	19
9	How do you rate the experiments in terms of their relevance to the real life application?	16	14	9	9	12
10	How do you rate the courses that you have learnt in relation to your current Job	20	12	18	10	15



DADI INSTITUTE OF ENGINEERING & TECHNOLOGY

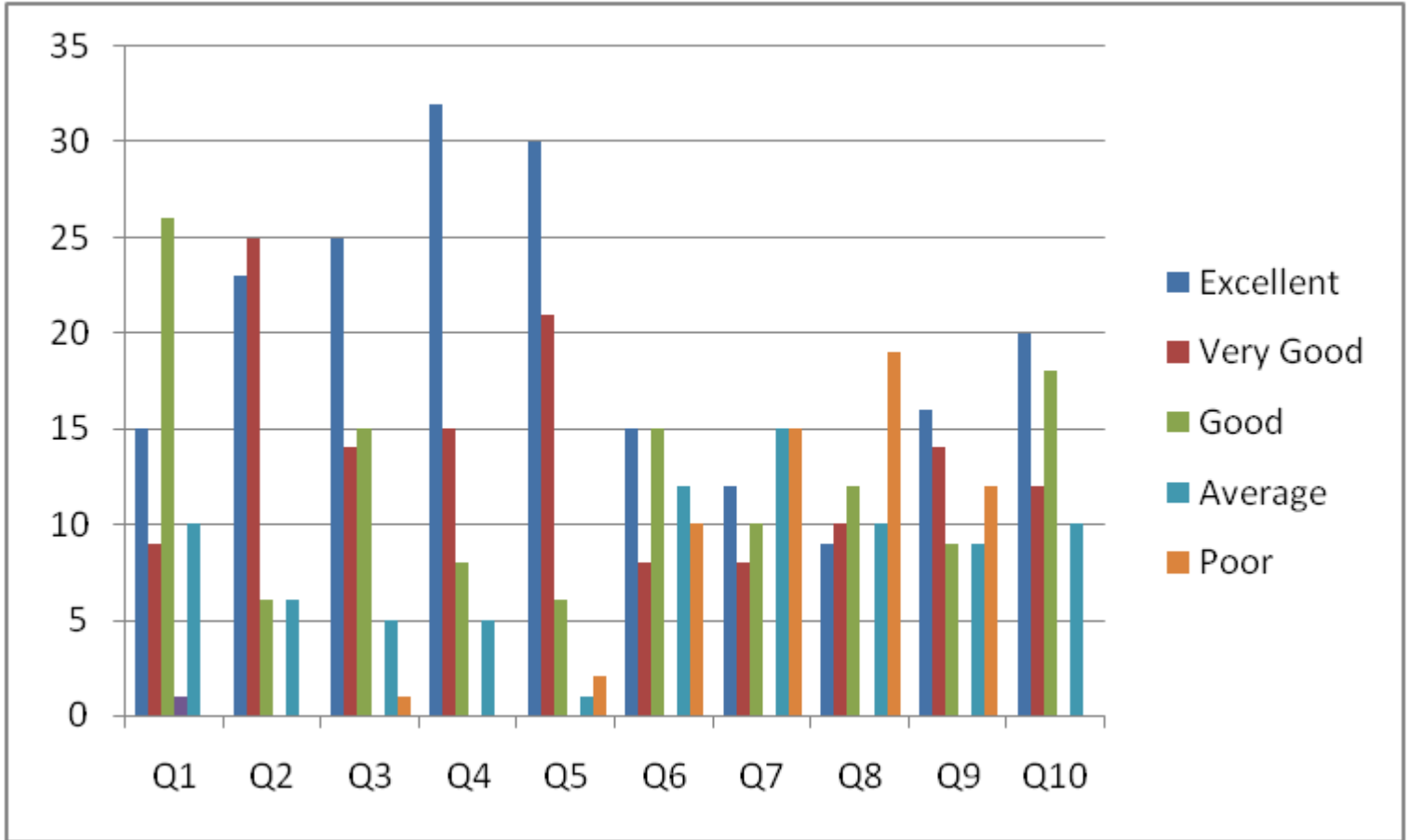
(Approved by A.I.C.T.E., New Delhi & Affiliated to JNTU, Kakinada)

NAAC ACCREDITED INSTITUTE Recognised under section 2(f) & 12(B) of UGC Act

ISO 9001:2008; ISO 14001:2004 & OHSAS 18001:2007 Certified Institution.

NH-5, Anakapalle – 531002, Visakhapatnam, A.P.

Phone: 08924-221111 / 221122/9963981111, e-mail: info@diet.edu.in





DADI INSTITUTE OF ENGINEERING & TECHNOLOGY

(Approved by A.I.C.T.E., New Delhi & Affiliated to JNTU, Kakinada)

NAAC ACCREDITED INSTITUTE Recognised under section 2(f) & 12(B) of UGC Act

ISO 9001:2008; ISO 14001:2004 & OHSAS 18001:2007 Certified Institution.

NH-5, Anakapalle – 531002, Visakhapatnam, A.P.

Phone: 08924-221111 / 221122/9963981111, e-mail: info@diet.edu.in

Department of Management Studies

Employers / Industry Personnel Feedback on the curriculum

SRL NO	Question	Excellent	Very Good	Good	Fair	Poor
1	How do you rate relevance of the courses in relation to the program?	1	2	0	0	0
2	How do you rate the sufficiency of the courses related to industry that are included in the program?	1	2	0	0	0
3	How do you rate the competencies in relation to the course content?	1	2	0	0	0
4	How do you rate the sequence of the units in the syllabus?	2	1	0	0	0
5	How do you rate the relevance of the topics to the Industry?	2	1	0	0	0
6	Rate the offering of the in relation to the specialization streams?	2	1	0	0	0
7	How do you rate the offering of the electives in relation to the Technological advancements?	2	1	0	0	0
8	How do you rate the courses which are skills related suiting to the Industry included into the programs?	1	2	0	0	0
9	How do you rate the applicability of the domains and the tools used for designing the experiments in terms of existing practices in the Industry?	1	2	0	0	0
10	How do you rate the experiments in terms of their relevance to the real life application?	1	2	0	0	0





DADI INSTITUTE OF ENGINEERING & TECHNOLOGY

(Approved by A.I.C.T.E., New Delhi & Affiliated to JNTU, Kakinada)

NAAC ACCREDITED INSTITUTE Recognised under section 2(f) & 12(B) of UGC Act

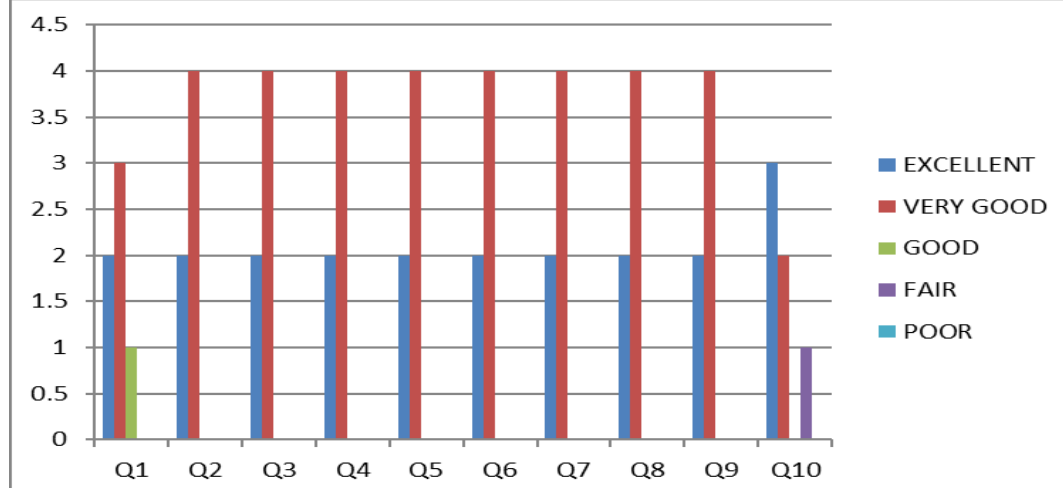
ISO 9001:2008; ISO 14001:2004 & OHSAS 18001:2007 Certified Institution.

NH-5, Anakapalle – 531002, Visakhapatnam, A.P.

Phone: 08924-221111 / 221122/9963981111, e-mail: info@diet.edu.in

PARENT FEED BACK

SRL NO	Question	Excellent	Very Good	Good	Fair	Poor
1	How do you rate the program that your ward is undergoing in terms of the load of the courses in different semesters?	2	3	1	0	0
2	How do you rate the availability of the Text and reference books in the Market?	2	4	0	0	0
3	How do you rate the quality and relevance of the courses included into the semester?	2	4	0	0	0
4	How do you rate the treatment of the students by the faculty irrespective of the background of the student that includes Gender, cast, community creed etc. in teaching and evaluation?	2	4	0	0	0
5	How do you rate ambience of the university for effective delivery of the academic programs?	2	4	0	0	0
6	How do you rate the courses in terms of their relevance to the latest technologies or future technologies?	2	4	0	0	0
7	How do you rate the programs based on the comfort of your ward in coping with the workload?	2	4	0	0	0
8	How do you rate the quality of teaching in the university?	2	4	0	0	0
9	How do you rate the outcomes that your ward has achieved from the courses	2	4	0	0	0
10	How do you rate the transparency of the evaluation system in the University?	3	2	0	0	0





DADI INSTITUTE OF ENGINEERING & TECHNOLOGY

(Approved by A.I.C.T.E., New Delhi & Affiliated to JNTU, Kakinada)

NAAC ACCREDITED INSTITUTE Recognised under section 2(f) & 12(B) of UGC Act

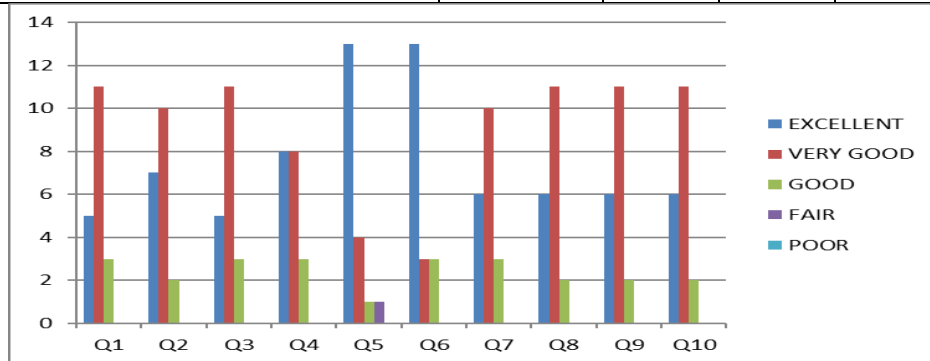
ISO 9001:2008; ISO 14001:2004 & OHSAS 18001:2007 Certified Institution.

NH-5, Anakapalle – 531002, Visakhapatnam, A.P.

Phone: 08924-221111 / 221122/9963981111, e-mail: info@diet.edu.in

ALUMNI FEEDBACK

SRL NO	Question	Excellent	Very Good	Good	Fair	Poor
1	How do you rate relevance of the courses in relation to the program?	5	11	3	0	0
2	How do you rate the sequence of the courses included into the programs?	7	10	2	0	0
3	How do you rate the competencies in relation to the course content?	5	11	3	0	0
4	How do rate the sequence of the topics in the units?	8	8	3	0	0
5	Rate the offering of the in relation to the specialization streams?	13	4	1	1	0
6	How do you rate the offering of the electives in relation to the Technological advancements?	13	3	3	0	0
7	How do you rate the courses which are skills related suiting to the Industry included into the programs?	6	10	3	0	0
8	How do you rate the domain used for designing the experiments in terms of the suitability of the Tools to the domain?	6	11	2	0	0
9	How do you rate the experiments in terms of their relevance to the real life application?	6	11	2	0	0
10	How do you rate the courses that you have learnt in relation to your current Job	6	11	2	0	0





DADI INSTITUTE OF ENGINEERING & TECHNOLOGY

(Approved by A.I.C.T.E., New Delhi & Affiliated to JNTU, Kakinada)

NAAC ACCREDITED INSTITUTE Recognised under section 2(f) & 12(B) of UGC Act

ISO 9001:2008; ISO 14001:2004 & OHSAS 18001:2007 Certified Institution.

NH-5, Anakapalle – 531002, Visakhapatnam, A.P.

Phone: 08924-221111 / 221122/9963981111, e-mail: info@diet.edu.in

TEACHERS FEED BACK

SRL NO	Question	Excellent	Very Good	Good	Fair	Poor
1	How do you rate the sequence of the Courses that you have studied are in sequence to what you have studied in the previous semester?	6	5	0	0	0
2	How do you rate the syllabus of the courses that you have studied in relation to the competencies expected out of the course?	4	7	0	0	0
3	How do you rate the relevance of the units in Syllabus relevant to the course?	5	4	2	0	0
4	How do you rate the sequence of the units in the course?	5	5	1	0	0
5	How do you rate the allocation of the credits to the courses?	4	3	4	0	0
6	How do you rate the distribution of the contact hours among the course components (L-T-P)?	5	4	2	0	0
7	How do you rate the offering of the electives in terms of their relevance to the specialization streams?	6	5	0	0	0
8	How do you rate the electives offered in relation to the Technological advancements?	6	5	0	0	0
9	How do you rate the relevance of the Text Books and reference books by their International recognition to the Courses?	7	4	0	0	0
10	Rate the Size of syllabus in terms of the load on the student	6	2	3	0	0

11	Rate the courses in terms of extra learning or self learning considering the design of the courses	7	2	2	0	0
12	Rate the courses in terms of sequence of offering considering whether the preceding courses have been covered.	4	3	4	0	0
13	How do you Rate the loading of the courses in a semester?	5	4	2	0	0
14	How do you rate the evaluation scheme designed for each of the course?	4	6	1	0	0
15	How do you rate the objectives stated for each of the course?	4	4	0	3	0



DADI INSTITUTE OF ENGINEERING & TECHNOLOGY

(Approved by A.I.C.T.E., New Delhi & Affiliated to JNTU, Kakinada)

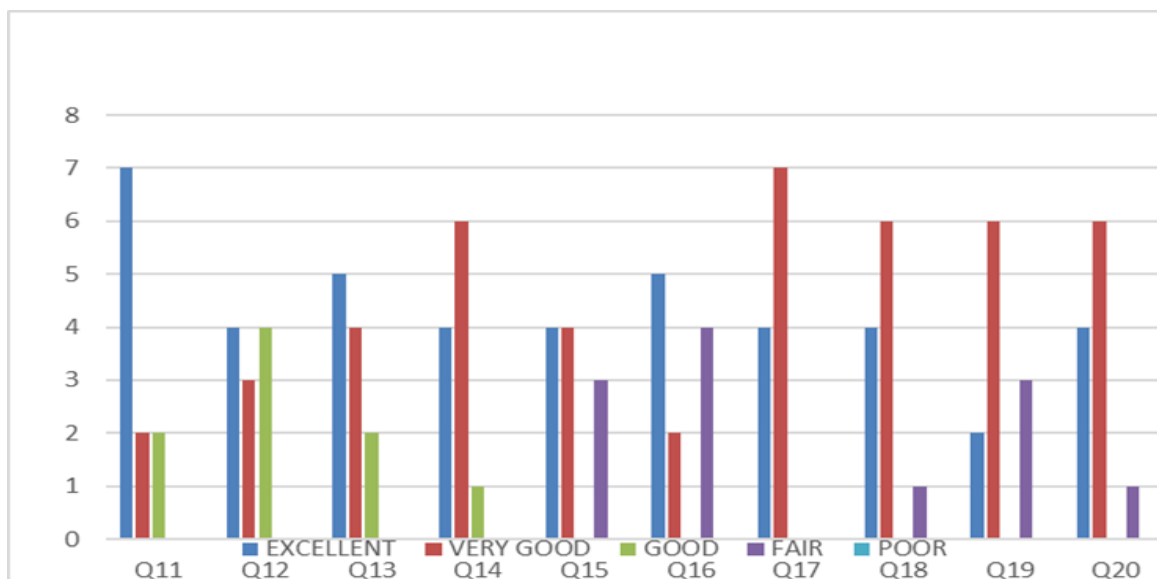
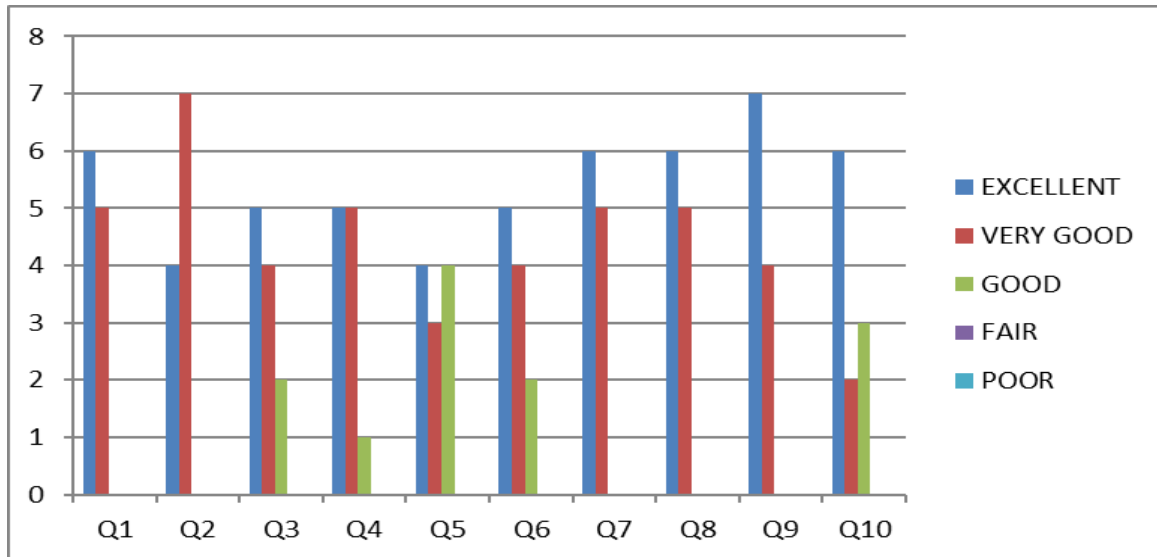
NAAC ACCREDITED INSTITUTE Recognised under section 2(f) & 12(B) of UGC Act

ISO 9001:2008; ISO 14001:2004 & OHSAS 18001:2007 Certified Institution.

NH-5, Anakapalle – 531002, Visakhapatnam, A.P.

Phone: 08924-221111 / 221122/9963981111, e-mail: info@diet.edu.in

16	How do you rate competencies expected out of the course?	5	2	0	4	0
17	How do you rate the composition of the courses in terms of Basic science, Engineering science, Humanities, Discipline core, discipline elective, open elective, project etc.?	4	7	0	0	0
18	How do you rate the percentage of courses having LAB components?	4	6	0	1	0
19	How do you rate the domain used for designing the experiments for the LAB components?	2	6	0	3	0
20	How do you rate the experiments in relation to the real life Applications?	4	6	0	1	0





DADI INSTITUTE OF ENGINEERING & TECHNOLOGY

(Approved by A.I.C.T.E., New Delhi & Affiliated to JNTU, Kakinada)

NAAC ACCREDITED INSTITUTE Recognised under section 2(f) & 12(B) of UGC Act

ISO 9001:2008; ISO 14001:2004 & OHSAS 18001:2007 Certified Institution.

NH-5, Anakapalle – 531002, Visakhapatnam, A.P.

Phone: 08924-221111 / 221122/9963981111, e-mail: info@diet.edu.in

STUDENT CURRICULUM FEEDBACK

SRL NO	Question	Excellent	Very Good	Good	Fair	Poor
1	How do you rate the sequence of the Courses that you have studied are in sequence to what you have studied in the previous semester?	11	15	7	0	0
2	How do you rate the syllabus of the courses that you have studied in relation to the competencies expected out of the course?	11	13	9	0	0
3	How do you rate the relevance of the units in Syllabus relevant to the course?	8	14	11	0	0
4	How do you rate the sequence of the units in the course?	8	12	13	0	0
5	How do you rate the allocation of the credits to the courses?	8	16	9	0	0
6	How do you rate the distribution of the contact hours among the course components (L-T-P)?	8	16	9	0	0
7	How do you rate the offering of the electives in terms of their relevance to the specialization streams?	9	14	10	0	0
8	How do you rate the electives offered in relation to the Technological advancements?	7	16	10	0	0
9	How do you rate the relevance of the Text Books and reference books by their International recognition to the Courses?	9	20	4	0	0
10	Rate the Size of syllabus in terms of the load on the student	9	18	6	0	0
11	Rate the courses in terms of extra learning or self learning considering the design of the courses	9	18	6	0	0
12	Rate the courses in terms of sequence of offering considering whether the preceding courses have been covered.	11	18	4	0	0
13	How do you Rate the loading of the courses in a semester?	10	20	3	0	0
14	How do you rate the evaluation scheme designed for each of the course?	9	21	3	0	0



DADI INSTITUTE OF ENGINEERING & TECHNOLOGY

(Approved by A.I.C.T.E., New Delhi & Affiliated to JNTU, Kakinada)

NAAC ACCREDITED INSTITUTE Recognised under section 2(f) & 12(B) of UGC Act

ISO 9001:2008; ISO 14001:2004 & OHSAS 18001:2007 Certified Institution.

NH-5, Anakapalle – 531002, Visakhapatnam, A.P.

Phone: 08924-221111 / 221122/9963981111, e-mail: info@diet.edu.in

15	How do you rate the objectives stated for each of the course?	9	19	5	0	0
16	How do you rate competencies expected out of the course?	12	19	2	0	0
17	How do you rate the composition of the courses in terms of Basic science, Engineering science, Humanities, Discipline core, discipline elective, open elective, project etc.?	11	19	3	0	0
18	How do you rate the percentage of courses having LAB components?	11	15	7	0	0
19	How do you rate the domain used for designing the experiments for the LAB components?	11	16	6	0	0
20	How do you rate the experiments in relation to the real life Applications?	11	13	9	0	0

