

DADI INSTITUTE OF ENGINEERING & TECHNOLOGY

(An Autonomous Institute)

Approved by A.I.C.T.E & Permanently affiliated to JNTU GV

Accredited by NAAC with 'A' Grade and Inclusion u/s 2(f) & 12(B) of UGC Act

An ISO 9001:2015, ISO 14001:2015 & ISO 45001:2018 Certified Institute.

NH-16, Anakapalle - 531002, Visakhapatnam, A.P.

Website: www.diet.edu.in, 9963993229 E-mail: principal@diet.edu.in



CRITERIA - 7

7.1.5.1 - The institutional initiatives for greening the campus are as follows:

- 1. Restricted entry of automobiles**
- 2. Use of bicycles/ Battery-powered vehicles**
- 3. Pedestrian-friendly pathways**
- 4. Ban on use of plastic**
- 5. Landscaping**

1. Restricted Entry of Automobiles:

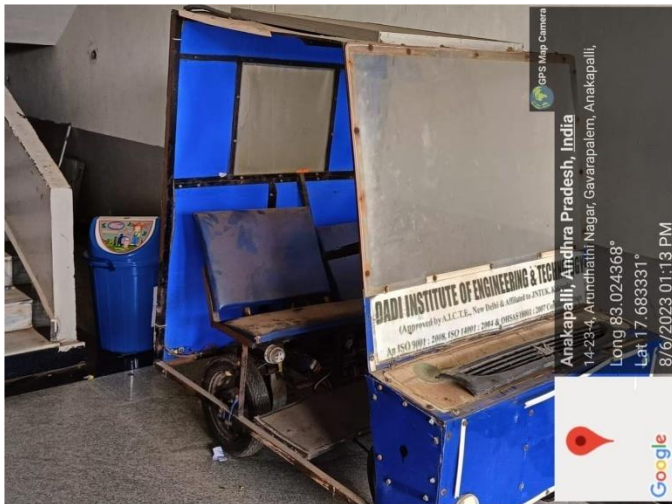
The institute manages a fleet of 10 buses that serve all areas of Anakapalle, ensuring convenient transportation for students and staff. It promotes the use of institute-provided transport over personal vehicles to enhance safety, security, fuel efficiency, and to mitigate environmental pollution. The buses undergo pollution checks conducted by an authorized agency. Vehicles owned by faculty or students that possess valid pollution check stickers are allowed on campus. Random inspections are carried out to verify the validity and timeliness of these certificates. Security protocols are mandatory for both two-wheelers and four-wheelers. Unauthorized vehicles are prohibited from entering the campus without prior approval. Visitors must log their name, purpose of visit, entry and exit times, and signature in a register at the entry gates. A designated parking area is reserved for external visitors. Additionally, CCTV cameras are installed at the gates to oversee visitor movements. A 'Clean Green Day' is observed once each semester to raise awareness about air pollution.



Restricted entry of automobiles

2. Use of Battery Powered Vehicles

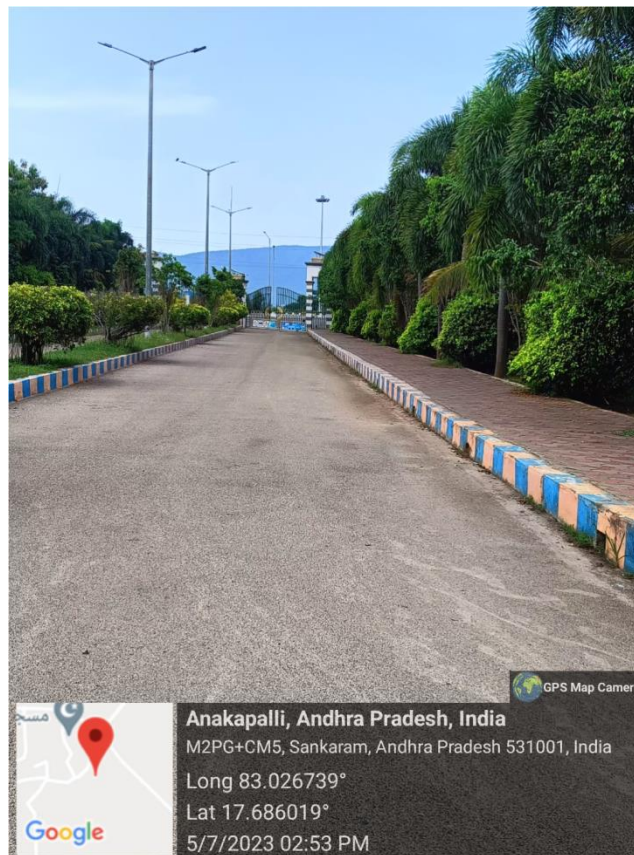
Students and staff from neighboring villages often choose bicycles as their preferred means of transportation to the Institute. This mode of transport is environmentally friendly and helps to reduce pollution.



Solar Powered Battery Vehicles

3. Pedestrian Friendly Pathways

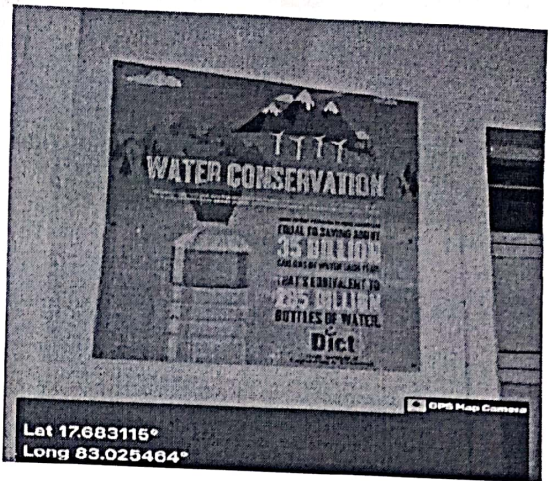
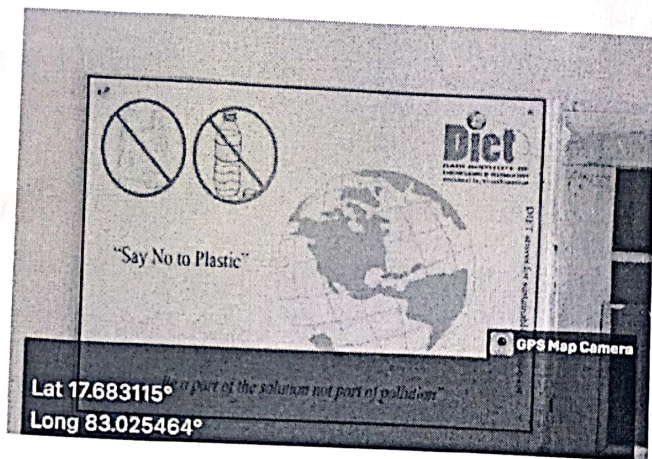
Parking facilities are available at the main entrance of the institute campus. Given that the campus is predominantly vehicle-free, with certain exceptions, both students and staff enjoys a pleasant experience while traversing the pedestrian-friendly pathways. The internal roads are adorned with trees and solar lights, and they are well-maintained by the campus maintenance committee.



Pathways for Pedestrians

4. Ban on use of Plastic

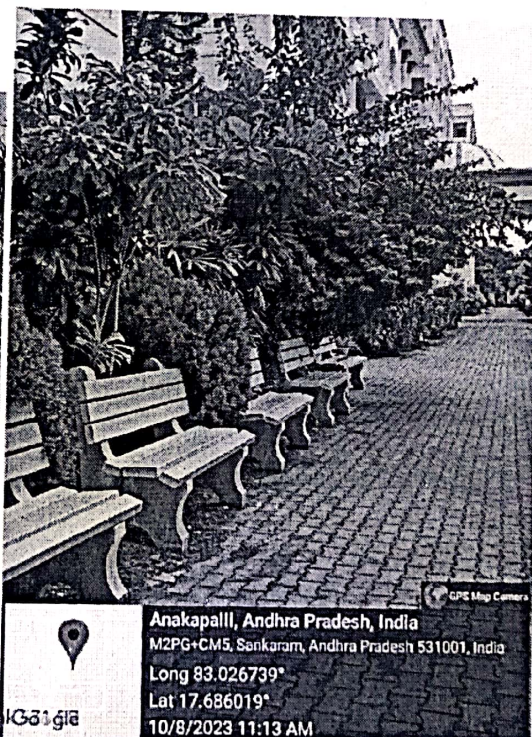
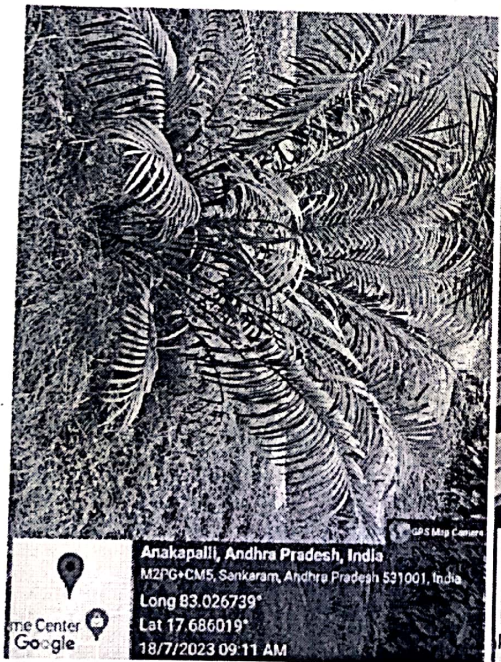
Circulars have been distributed throughout the campus to prohibit the use of plastic. A slogan promoting a "no-plastic zone" has been established within the premises. The use of single-use plastic items, including bottles, bags, spoons, straws, and cups, is entirely banned. Efforts to raise awareness among staff and students have been implemented through orientation programs and informational display boards located across the campus. To further limit plastic usage, the cafeteria has replaced plastic tea cups and glasses with stainless steel alternatives. Staff and students are encouraged to utilize steel or copper water bottles instead of plastic ones. Signage indicating the ban on plastics has been mounted on the walls in many places inside the campus.



Ban of plastic signboards

5. Landscaping with trees and plants

Dadi Institute of Engineering and Technology, encompassing an area of 10.16 acres, features several structures, including the main building and a cafeteria. The campus is home to approximately 35 different species of plants. The students of the National Service Scheme (N.S.S.) and the non-teaching staff are responsible for maintaining the campus, ensuring it remains green and clean at all times.



Plantation

D. Venkatesh
PRINCIPAL
 Dadi Institute of
 Engineering & Technology
 Autonomous