

Criterion-7 Institutional Values And Best Practices

7.1.2 The Institution has facilities for Alternate Sources of Energy and Energy Conservation Measures

1. Solar energy

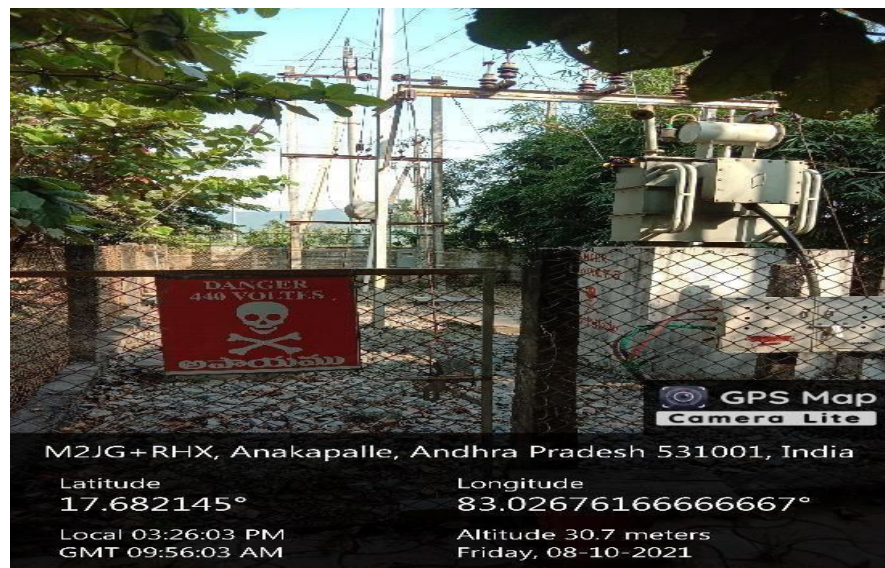


Solar Panels provided at the entrance of the Institution

2. Wheeling to the Grid



Devices installed for wheeling to the Grid



Transformer and Wheeling to the Grid at South-East portion of the Institution

Use of LED Bulbs/Power Efficient Equipment



LED Lights in the campus

