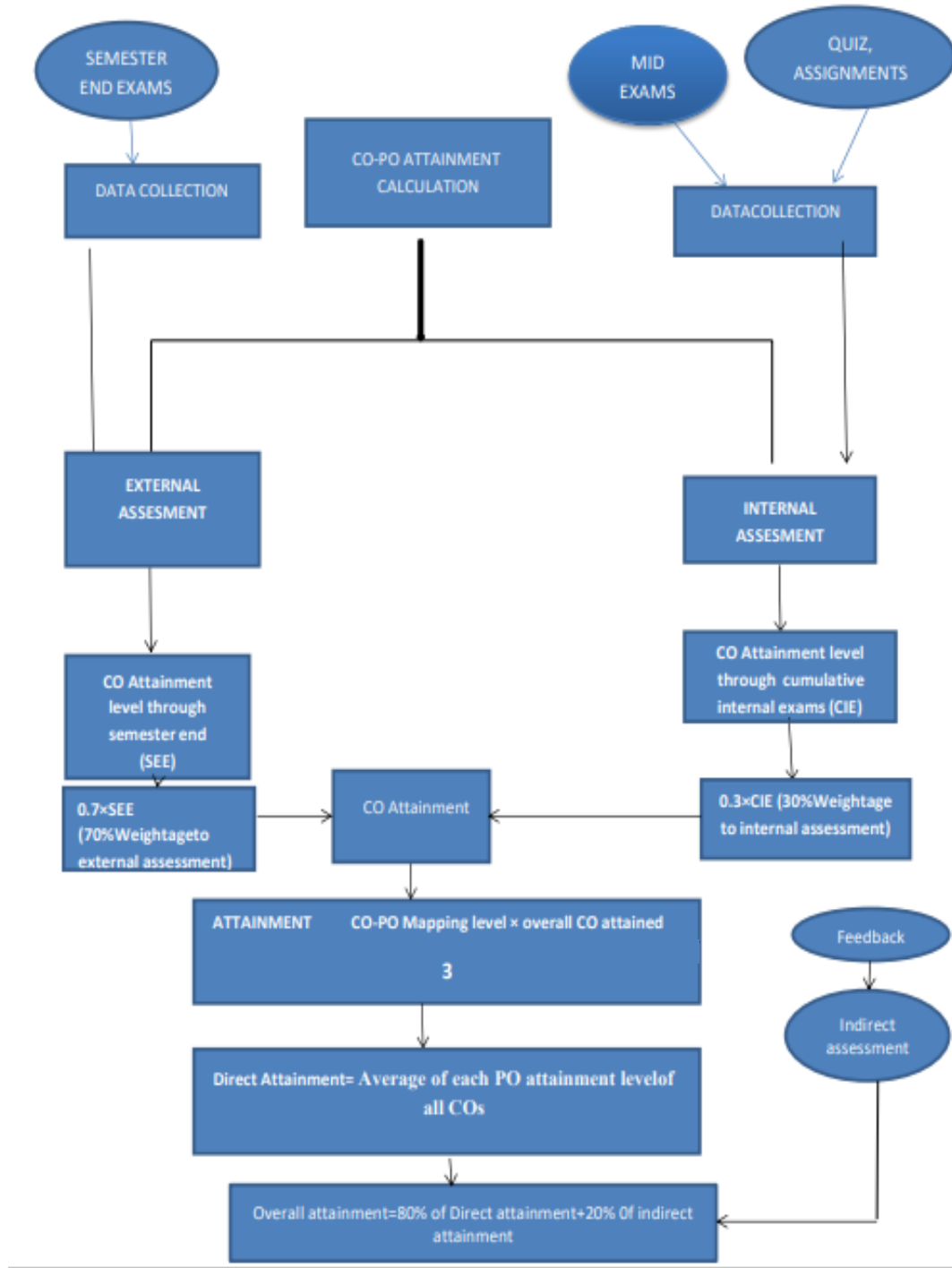


FLOW CHART(CO-POATTAINMENTPROCESS)



**Faculty Feedback Analysis
R16 Regulation**

S. No	Question	Excellent(5)	Good(4)	Average(3)	Satisfactory(2)	Poor(1)
Q1	The curriculum of the course emphasizes the learning of job-oriented skills	8	5	0	0	0
Q2	The time and credit allotted to each course	4	9	0	0	0
Q3	The time and credit allotted to each course	4	7	1	1	0
Q4	The contents of the course in The curriculum are comprehensive	7	5	1	0	0
Q5	The curriculum does not result in any over loading on students during the semester(s).	1	7	5	0	0
Q6	The curriculum of the course is updated and useful in gaining subject knowledge	7	6	0	0	0
Q7	Content soft he course enable acquisition of knowledge and related skills	3	8	1	1	0
Q8	The curriculum of the course gives fundamentals and leads to critical thinking	9	3	1	0	0
Q9	The curriculum of the course is useful in gaining necessary skills for facing in different competitive examinations	8	5	0	0	0
Q10	The completion of curriculum gives confidence for pursuing higher studies	1 0	3	0	0	0

$$\text{Feedback percentage} = (\text{ExcellentResponses} + \text{GoodResponses} + \text{AverageResponse}) / \text{Totalresponses} \times 100$$

$$= (128/130) \times 100 = \mathbf{98.4\%}$$

ALUMNI FEEDBACK ON CURRICULUM
Feedback Analysis
R16 Regulation

S.No	Question	Excellent	Good	Average	Satisfactory	Poor
		5	4	3	2	1
Q1	Novelty of the curriculum for current requirements	4	2	0	0	0
Q2	Effectiveness of curriculum to develop innovative thinking	2	3	1	0	0
Q3	Effectiveness of curriculum to develop Entrepreneurship	0	5	1	0	0
Q4	Effectiveness of curriculum to develop skill oriented human resources	2	3	1	0	0
Q5	Usefulness of Elective Courses of curriculum	0	5	1	0	0
Q6	Opinion about present curriculum related with employability and professional development	3	3	0	0	0
Q7	Curriculum related educational facilities provided in the college	2	4	0	0	0
Q8	ICT infrastructure provided by the college for effective curriculum	1	3	4	0	0
Q9	Evaluation reforms in current evaluation system	2	3	1	0	0
Q10	Co-curricular activities implemented by the college	0	6	0	0	0
	Total(For office use only)					

$$\text{Feedback percentage} = (\text{ExcellentResponses} + \text{GoodResponses} + \text{AverageResponse}) / \text{Totalresponses} \times 100$$

$$= (60/60) \times 100 = \mathbf{100\%}$$

DEPARTMENT OF CIVIL ENGINEERING
ALUMNI FEEDBACK ON CURRICULUM
Feedback Analysis
R16 Regulation

S.No	Question	Excellent	Good	Average	Satisfactory	Poor
		5	4	3	2	1
Q1	Novelty of the curriculum for current requirements	4	2	0	0	0
Q2	Effectiveness of curriculum to develop innovative Thinking	2	3	1	0	0
Q3	Effectiveness of curriculum to develop entrepreneurship	0	5	1	0	0
Q4	Effectiveness of curriculum to develop skill oriented human resources	2	3	1	0	0
Q5	Usefulness of Elective Courses of curriculum	0	5	1	0	0
Q6	Opinion about present curriculum related with employability and professional development	3	3	0	0	0
Q7	Curriculum related educational facilities provided in the college	2	4	0	0	0
Q8	ICT infrastructure provided by the college for effective curriculum	1	3	4	0	0
Q9	Evaluation reforms in current evaluation system	2	3	1	0	0
Q10	Co-curricular activities implemented by the college	0	6	0	0	0
	Total(For office use only)					

Feedback percentage = (ExcellentResponses+GoodResponses+AverageResponse)/Totalresponses×100
=60/60×100=100%

DEPARTMENT OF ELECTRONICS AND COMMUNICATION ENGINEERING
ALUMNI FEEDBACKON
Curriculum Feedback Analysis
R16 Regulation

S.No	Question	Excellent	Good	Average	Satisfactor y	Poor
		5	4	3	2	1
Q1	Novelty of the curriculum for current requirements	0	5	0	0	0
Q2	Effectiveness of curriculum to develop innovative Thinking	1	2	3	0	0
Q3	Effectiveness of curriculum to develop entrepreneurship	0	6	0	0	0
Q4	Effectiveness of curriculum to develop skill oriented human resources	5	0	1	0	0
Q5	Usefulness of Elective Courses of curriculum	2	4	1	0	0
Q6	Opinion about present curriculum related with employability and professional development	0	2	3	0	0
Q7	Curriculum related educational facilities provided in the college	2	4	0	0	0
Q8	ICT infrastructure provided by the college for effective curriculum	4	0	2	0	0
Q9	Evaluation reforms in current evaluation system	5	1	0	0	0
Q10	Co-curricular activities implemented by the college	5	0	1	0	0
	Total(For office use only)					

$$\text{Feedback percentage} = (\text{ExcellentResponses} + \text{GoodResponses} + \text{AverageResponse}) / \text{Totalresponses} \times 100$$

$$= 60/60 \times 100 = 100\%$$

DEPARTMENT OF ELECTRICAL AND ELECTRONICS ENGINEERING
ALUMNI FEEDBACK ON CURRICULUM
Feedback Analysis
R16 Regulation

S.No	Question	Excellent	Good	Average	Satisfactory	Poor
		5	4	3	2	1
Q1	Novelty of the curriculum for current requirements	5	5	0	0	0
Q2	Effectiveness of curriculum to develop innovative Thinking	1	5	0	0	0
Q3	Effectiveness of curriculum to develop entrepreneurship	4	2	0	0	0
Q4	Effectiveness of curriculum to develop skill oriented human resources	4	2	0	0	0
Q5	Usefulness of Elective Courses of curriculum	2	4	0	0	0
Q6	Opinion about present curriculum related with employability and professional development	3	3	0	0	0
Q7	Curriculum related educational facilities provided in the college	3	3	0	0	0
Q8	ICT infrastructure provided by the college for effective curriculum	4	2	0	0	0
Q9	Evaluation reforms in current evaluation system	1	5	0	0	0
Q10	Co-curricular activities implemented by the college	4	2	0	0	0
	Total (For office use only)					

$$\text{Feedback percentage} = (\text{ExcellentResponses} + \text{GoodResponses} + \text{AverageResponse}) / \text{Totalresponses} \times 100$$

$$= 60/60 \times 100 = \mathbf{100\%}$$

DEPARTMENT OF COMPUTER SCIENCE ENGINEERING
ALUMNI FEEDBACK ON CURRICULUM
Feedback Analysis
R16 Regulation

S.No	Question	Excellent	Good	Average	Satisfactory	Poor
		5	4	3	2	1
Q1	Novelty of the curriculum for current requirements	5	1	0	0	0
Q2	Effectiveness of curriculum to develop innovative Thinking	2	4	1	0	0
Q3	Effectiveness of curriculum to develop entrepreneurship	4	1	1	0	0
Q4	Effectiveness of curriculum to develop skill oriented human resources	2	2	2	0	0
Q5	Usefulness of Elective Courses of curriculum	3	3	0	0	0
Q6	Opinion about present curriculum related with employability and professional development	3	2	1	0	0
Q7	Curriculum related educational facilities provided in the college	4	2	0	0	0
Q8	ICT infrastructure provided by the college for effective curriculum	3	4	0	0	0
Q9	Evaluation reforms in current evaluation system	5	1	0	0	0
Q10	Co-curricular activities implemented by the college	2	3	1	0	0
	Total(For office use only)					

Feedback percentage = $(\text{ExcellentResponses} + \text{GoodResponses} + \text{AverageResponse}) / \text{Totalresponses} \times 100$
 $= 60/60 \times 100 = \mathbf{100\%}$

DEPARTMENT OF MBA
ALUMNI FEEDBACK ON CURRICULUM
Feedback Analysis
R16 Regulation

S.No	Question	Excellent	Good	Average	Satisfactory	Poor
		5	4	3	2	1
Q1	Novelty of the curriculum for current requirements	5	1	0	0	0
Q2	Effectiveness of curriculum to develop innovative Thinking	4	2	0	0	0
Q3	Effectiveness of curriculum to develop entrepreneurship	4	2	0	0	0
Q4	Effectiveness of curriculum to develop skill oriented human resources	3	2	1	0	0
Q5	Usefulness of Elective Courses of curriculum	4	2	0	0	0
Q6	Opinion about present curriculum related with employability and professional development	2	3	0	1	0
Q7	Curriculum related educational facilities provided in the college	5	1	0	0	0
Q8	ICT infrastructure provided by the college for effective curriculum	4	2	0	0	0
Q9	Evaluation reforms in current evaluation system	4	2	0	0	0
Q10	Co-curricular activities implemented by the college	6	0	0	0	0
	Total(For office use only)					

Feedback percentage = $(\text{Excellent Responses} + \text{Good Responses} + \text{Average Response}) / \text{Total responses} \times 100$
 $= 59/60 \times 100 = \mathbf{98.3\%}$

DEPARTMENT OF ELECTRICAL AND ELECTRONICS ENGINEERING
Faculty Feedback Analysis
R16 Regulation

S.No	Question	Excellent(5)	Good(4)	Average(3)	Satisfactory(2)	Poor(1)
Q1	The curriculum of the course emphasizes the learning of job-oriented skills	1	1	1	0	0
Q2	The time and credit allotted to each course	0	3	0	0	0
Q3	The time and credit allotted to each course	2	0	1	0	0
Q4	The contents of the course in the curriculum are comprehensive	1	2	0	0	0
Q5	The curriculum does not result in any overloading on students during the semester(s).	1	2	0	0	0
Q6	The curriculum of the course is updated and useful in gaining subject knowledge	1	1	1	0	0
Q7	Contents of the course enable acquisition of knowledge and related skills	2	1	0	0	0
Q8	The curriculum of the course gives fundamentals and leads to critical thinking	1	2	0	0	0
Q9	The curriculum of the course is useful in gaining necessary skills for facing in different competitive examinations	0	2	1	0	0
Q10	The completion of curriculum gives confidence for pursuing higher studies	0	2	1	0	0

$$\text{Feedback percentage} = (\text{ExcellentResponses} + \text{GoodResponses} + \text{AverageResponse}) / \text{Totalresponses} \times 100$$

$$= 30/30 \times 100 = \mathbf{100\%}$$

DEPARTMENT OF CIVIL ENGINEERING
Faculty Feedback Analysis
R16 Regulation

S. No	Question	Excellent(5)	Good(4)	Average(3)	Satisfactory(2)	Poor(1)
Q1	The curriculum of the course emphasizes the learning of job-oriented skills	7	2	2	0	0
Q2	The time and credit allotted to each course	5	5	1	0	0
Q3	The time and credit allotted to each course	0	9	2	0	0
Q4	The contents of the course in the curriculum are comprehensive	7	4	0	1	0
Q5	The curriculum does not result in any overloading on students during the semester(s).	6	3	2	0	0
Q6	The curriculum of the course is updated and useful in gaining subject knowledge	3	7	1	0	0
Q7	Contents of the course enable acquisition of knowledge and related skills	3	5	3	0	0
Q8	The curriculum of the course gives fundamentals and leads to critical thinking	6	4	1	0	0
Q9	The curriculum of the course is useful in gaining necessary skills for facing in different competitive examinations	2	9	0	0	0
Q10	The completion of curriculum gives confidence for pursuing higher studies	5	4	2	0	0

$$\text{Feedback percentage} = (\text{ExcellentResponses} + \text{GoodResponses} + \text{AverageResponse}) / \text{Totalresponses} \times 100$$

$$= 110/110 \times 100 = \mathbf{100\%}$$

DEPARTMENT OF CIVIL ENGINEERING
Faculty Feedback Analysis
R16 Regulation

S. No	Question	Excellent(5)	Good(4)	Average(3)	Satisfactory(2)	Poor(1)
Q1	The curriculum of the course emphasizes the learning of job-oriented skills	8	5	0	0	0
Q2	The time and credit allotted to each course	4	9	0	0	0
Q3	The time and credit allotted to each course	4	7	1	1	0
Q4	The contents of the course in the curriculum are comprehensive	7	5	1	0	0
Q5	The curriculum does not result in any overloading on students during the semester(s).	1	7	5	0	0
Q6	The curriculum of the course is updated and useful in gaining subject knowledge	7	6	0	0	0
Q7	Contents of the course enable acquisition of knowledge and related skills	3	8	1	1	0
Q8	The curriculum of the course gives fundamentals and leads to critical thinking	9	3	1	0	0
Q9	The curriculum of the course is useful in gaining necessary skills for facing in different competitive examinations	8	5	0	0	0
Q10	The completion of curriculum gives confidence for pursuing higher studies	10	3	0	0	0

$$\text{Feedback percentage} = (\text{ExcellentResponses} + \text{GoodResponses} + \text{AverageResponse}) / \text{Totalresponses} \times 100$$

$$= 128/130 \times 100 = \mathbf{98.46}$$

**DEPARTMENT OF ELECTRONICS AND COMMUNICATION
ENGINEERING
Faculty Feedback Analysis
R16 Regulation**

S. No	Question	Excellent(5)	Good(4)	Average(3)	Satisfactory(2)	Poor(1)
Q1	The curriculum of the course emphasizes the learning of job-oriented skills	4	4	0	0	0
Q2	The time and credit allotted to each course	3	5	0	0	0
Q3	The time and credit allotted to each course	5	3	0	0	0
Q4	The contents of the course in the curriculum are comprehensive	5	3	1	0	0
Q5	The curriculum does not result in any overloading on students during the semester(s).	3	4	0	0	0
Q6	The curriculum of the course is updated and useful in gaining subject knowledge	3	5	0	0	0
Q7	Contents of the course enable acquisition of knowledge and related skills	4	4	0	0	0
Q8	The curriculum of the course Gives fundamentals and leads to critical thinking	4	3	1	0	0
Q9	The curriculum of the course is useful in gaining necessary skills for facing in different competitive examinations	3	5	0	0	0
Q10	The completion of curriculum Gives confidence for pursuing higher studies	4	4	0	0	0

Feedback percentage = (Excellent Responses + Good Responses+ Average Response)/ Total responses ×100

$$= 80/80 \times 100 = \mathbf{100\%}$$